

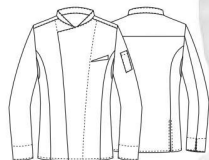
*chef style*

Giacche bottone a pressione  
Press studs fastening jackets

**NEW**



■ Art. 15P08G647  
**GIACCA CLAUDIO**  
Claudio jacket



**Colore / Color**  
Bianco / White

88% Cotone / Cotton  
12% Poliestere / Polyester  
195 GR/MTQ

**Taglie / Sizes**  
S ÷ XXXL

- Bottoni a pressione  
Press studs
- Taschino sul petto  
Breast pocket
- Taschino portapenna  
sulla manica  
Pen pocket on sleeve
- 2 spacchetti dietro  
2 side vents
- Inserti in rete  
Network fabric panels
- Tessuto piquet / Piquet fabric
- Slim fit



**SLIMFIT**

**FLEXFIT SYSTEM**

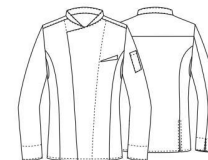
*chef style*

Giacche bottone a pressione  
Press studs fastening jackets

**NEW**

 TENCEL®

■ Art. 15P08G648  
**GIACCA CLAUDIO**  
Claudio jacket



**Colore / Color**  
Nero / Black

50% Pes / Pes  
50% Ciy / Ciy  
190 GR/MTQ

**Taglie / Sizes**  
S ÷ XXXL

- Bottoni a pressione  
Press studs
- Taschino sul petto  
Breast pocket
- Taschino portapenna  
sulla manica  
Pen pocket on sleeve
- 2 spacchetti dietro  
2 side vents
- Inserti in rete  
Network fabric panels
- Slim fit



**SLIMFIT**

**FLEXFIT SYSTEM**

*chef style*

Giacche bottone a pressione  
Press studs fastening jackets

**NEW**

■ Art. 15P08G652  
**GIACCA CUOCO GIANLUIGI**  
Gianluigi chef jacket

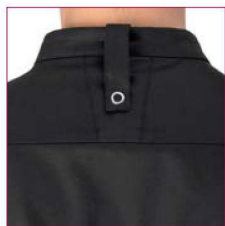


**Colore / Color**  
Nero / Black

60% Cotone / Cotton  
40% Poliestere / Polyester  
200 GR/MTQ

**Taglie / Sizes**  
S ÷ 4XL

- Bottoni a pressione  
Press studs
- Taschino sul petto  
Breast pocket
- Taschino portapenna  
sulla manica  
Pen pocket on sleeve
- 2 spacchetti dietro  
2 side vents
- Inserti in rete  
Network fabric panels
- Asola nel collo per inserire  
il laccio del grembiule  
Loop on the collar to insert  
apron's halter
- Slim fit



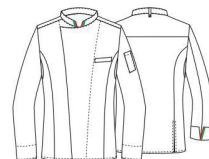
EASY CARE

SLIMFIT

FLEXFIT SYSTEM

Asola nel collo per inserire  
il laccio del grembiule  
Loop on the collar to insert  
apron's halter

■ Art. 15P08G652  
**GIACCA CUOCO GIANLUIGI**  
Gianluigi chef jacket

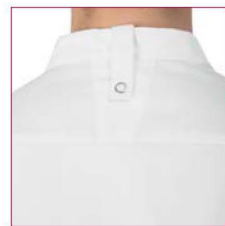


**Colore / Color**  
Bianco / White

60% Cotone / Cotton  
40% Poliestere / Polyester  
200 GR/MTQ

**Taglie / Sizes**  
S ÷ 4XL

- Bottoni a pressione  
Press studs
- Taschino sul petto  
Breast pocket
- Taschino portapenna  
sulla manica  
Pen pocket on sleeve
- 2 spacchetti dietro  
2 side vents
- Inserti in rete  
Network fabric panels
- Asola nel collo per inserire  
il laccio del grembiule  
Loop on the collar to insert  
apron's halter
- Slim fit



EASY CARE

SLIMFIT

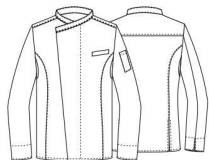
FLEXFIT SYSTEM

Asola nel collo per inserire  
il laccio del grembiule  
Loop on the collar to insert  
apron's halter

*chef style*

Giacche bottone a pressione  
Press studs fastening jackets

■ Art. 14P08G471  
**GIACCA RENÉ**  
René jacket



**Colore / Color**  
Tortora / Toupé

65% Poliestere / Polyester  
35% Cotone / Cotton  
195 GR/MTQ

**Taglie / Sizes**  
S ÷ XXXL

- Bottoni a pressione  
Press studs
- Taschino sul petto  
Breast pocket
- Taschino portapenna  
sulla manica  
Pen pocket on sleeve
- Inserti in rete  
Network fabric panels
- 2 spacchetti dietro  
2 side vents



Inserti in rete  
Network fabric panels



*chef style*

Giacche bottone a pressione  
Press studs fastening jackets



■ Art. 14P01H441  
Tortora / Toupé



**ACCESSORI ABBINATI**  
Matching accessories

■ Art. 14P05I541



■ Art. 14P05I540  
TAGLIA UNICA / ONE SIZE  
Tortora / Toupé

■ Art. 14P08G472  
**GIACCA RODOLFO**  
Rodolfo jacket



**Colore / Color**  
Bianco e tortora  
White and toupé

60% Cotone / Cotton  
40% Poliestere / Polyester  
200 GR/MTQ

**Taglie / Sizes**  
S ÷ XXXL

- Bottoni a pressione  
Press studs
- Taschino sul petto  
Breast pocket
- Taschino portapenna  
sulla manica  
Pen pocket on sleeve
- Inserti in rete  
Network fabric panels
- 2 spacchetti dietro  
2 side vents



*chef style*

Giacche bottone a pressione  
Press studs fastening jackets



■ Art. 15P08H306  
Nero / Black



■ Art. 14P08G473  
**GIACCA THOMAS**  
Thomas jacket



**Colore / Color**  
Nero / Black

**65%** Poliestere / Polyester  
**35%** Cotone / Cotton  
190 GR/MTQ

**Taglie / Sizes**  
S ÷ XXXL

- Bottoni a pressione  
Press studs
- Taschino sul petto  
Breast pocket
- Taschino portapenna  
sulla manica  
Pen pocket on sleeve
- 2 spacchetti dietro  
2 side vents
- Inserti in rete  
Network fabric panels
- Slim fit



SLIMFIT

FLEXFIT SYSTEM

*chef style*  
Giacche bottone a pressione  
Press studs fastening jackets

**NEW**



■ Art. 15P08H354  
Bianco / White



■ Art. 15P08G473  
**GIACCA THOMAS**  
Thomas jacket



**Colore / Color**  
Bianco / White

**100%** Cotone / Cotton  
190 GR/MTQ

**Taglie / Sizes**  
S ÷ XXXL

- Bottoni a pressione  
Press studs
- Taschino sul petto  
Breast pocket
- Taschino portapenna  
sulla manica  
Pen pocket on sleeve
- 2 spacchetti dietro  
2 side vents
- Inserti in rete  
Network fabric panels
- Slim fit



SLIMFIT

FLEXFIT SYSTEM



*chef style*  
Giacche bottone estraibile  
Removable buttons fastening jackets

**NEW**



■ Art. 15P08H617  
Nero e pistacchio  
Black and pistachio



■ Art. 15P08G643  
**GIACCA IVANO**  
Ivano jacket



**Colore / Color**  
Nero / Black

**65%** Poliestere / Polyester  
**35%** Cotone / Cotton  
190 GR/MTQ

**Taglie / Sizes**  
S ÷ XXXL

- Bottoni estraibili  
Removable buttons
- Taschino sul petto  
Breast pocket
- Taschino portapenna  
sulla manica  
Pen pocket on sleeve
- Inserti in rete  
network fabric panels



*chef style*  
Giacche bottone estraibile  
Removable buttons fastening jackets

**NEW**



■ Art. 15P08H616  
Bianco e pistacchio  
White and pistachio



■ Art. 15P08G644  
**GIACCA IVANO**  
Ivano jacket



**Colore / Color**  
Bianco / White

**100%** Cotone / Cotton  
190 GR/MTQ

**Taglie / Sizes**  
S ÷ XXXL

- Bottoni estraibili  
Removable buttons
- Taschino sul petto  
Breast pocket
- Taschino portapenna  
sulla manica  
Pen pocket on sleeve
- Inserti in rete  
Network fabric panels



*chef style*

Giacche bottoni estraibile  
Removable buttons fastening jackets



■ Art. 10M2072N  
Nero e rosso  
Black and red



**ACCESSORI ABBINATI**  
Matching accessories



■ Art. 416DIVA  
TAGLIA UNICA / ONE SIZE

Colore / Color  
Nero e rosso / Black and red

■ Art. 10M2035N  
**GIACCA MASSIMO**  
Massimo jacket



Colore / Color  
Nero / Black

65% Poliestere / Polyester  
35% Cotone / Cotton  
190 GR/MTQ

Taglie / Sizes  
XS ÷ 4XL

- Bottoni estraibili  
Removable buttons
- Taschino sul petto  
Breast pocket
- Taschino portapenna  
sulla manica  
Pen pocket on sleeve
- Inserti in rete  
Network fabric panels



*chef style*

Giacche bottoni estraibile  
Removable buttons fastening jackets

■ Art. 11P08G14  
**GIACCA BRASILE**  
Brasile jacket



Colore / Color  
Bianco / White

100% Cotone / Cotton  
190 GR/MTQ

Taglie / Sizes  
S ÷ 5XL

- Bottoni estraibili  
Removable buttons
- Taschino sul petto  
Breast pocket
- Taschino portapenna  
sulla manica  
Pen pocket on sleeve
- Inserti in rete  
Network fabric panels



**Colori disponibili**  
Available colors

■ Art. 11P08G15

Colore / Color  
Nero / Black

65% Poliestere / Polyester  
35% Cotone / Cotton  
190 GR/MTQ



*chef style*  
Lady chef - giacche  
Lady chef - jackets

■ Art. 14P08G467  
**GIACCA STEFANIA**  
Stefania jacket



**Colore / Color**  
Prugna / Purple

65% Poliestere / Polyester  
35% Cotone / Cotton  
195 GR/MTQ

**Taglie / Sizes**  
XS ÷ XXL

- Bottoni automatici  
Press studs
- Taschino sul petto  
Breast pocket
- Taschino portapenna  
sulla manica  
Pen pocket on sleeve
- Inserti in rete  
Network fabric panels
- Slim fit



Inserti in rete  
Network fabric panels



SLIMFIT



SLIMFIT



■ Art. 14P08G467  
Tortora / Toupé



■ Art. 14P08G468  
Blu / Blue  
60% Cotone / Cotton 40% Poliestere / Polyester  
200 GR/MTQ XS ÷ XXXL



SLIMFIT

EASY CARE



■ Art. 14P08G468  
Bianco / White  
60% Cotone / Cotton 40% Poliestere / Polyester  
200 GR/MTQ XS ÷ XXXL



**ACCESSORI ABBINATI / Matching accessories**

**Colore / Color** Tortora / Toupé

**Colore / Color** Blu / Blue



■ Art. 14P051540  
TAGLIA UNICA / ONE SIZE



■ Art. 14P051543  
TAGLIA UNICA / ONE SIZE



■ Art. 14P051541  
TAGLIA UNICA / ONE SIZE



■ Art. 443DIVA  
TAGLIA UNICA / ONE SIZE

**ACCESSORI ABBINATI**  
Matching accessories

**Colore / Color** Prugna / Purple

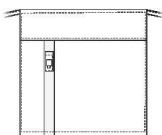


■ Art. 14P051540  
TAGLIA UNICA / ONE SIZE



■ Art. 14P051541  
TAGLIA UNICA / ONE SIZE

■ **Art. 11P08H62**  
**GREMBIULE ALEX**  
*Alex apron*



**Misure / Dimensions**  
90x90 cm

60% Cotone / Cotton  
40% Poliestere / Polyester  
200 GR/MTQ

**Taglie / Sizes**  
TAGLIA UNICA / ONE SIZE

■ 1 portapenne / 1 penholder



EASY CARE

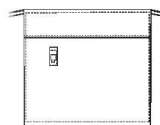


Bianco e grigio  
*White and grey*



Bianco e bluotto  
*White and royal*

■ **Art. 15P08H306**  
**GREMBIULE ALEX**  
*Alex apron*



**Misure / Dimensions**  
90x90 cm

65% Poliestere / Polyester  
35% Cotone / Cotton  
190 GR/MTQ

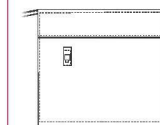
**Taglie / Sizes**  
TAGLIA UNICA / ONE SIZE

■ 1 portapenne / 1 penholder



Nero e tricolore  
*Black and tricolor*

■ **Art. 15P08H354**  
**GREMBIULE ALEX**  
*Alex apron*



**Misure / Dimensions**  
90x90 cm

100% Cotone / Cotton  
190 GR/MTQ

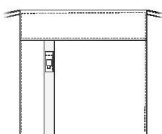
**Taglie / Sizes**  
TAGLIA UNICA / ONE SIZE

■ 1 portapenne / 1 penholder



Bianco e tricolore  
*White and tricolor*

■ **Art. 10M2072**  
**GREMBIULE ALEX**  
*Alex apron*



**Misure / Dimensions**  
90x90 cm

60% Cotone / Cotton  
40% Poliestere / Polyester  
200 GR/MTQ

**Taglie / Sizes**  
TAGLIA UNICA / ONE SIZE

■ 1 portapenne / 1 penholder

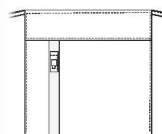


EASY CARE



Bianco e rosso  
*White and red*

■ **Art. 10M2072N**  
**GREMBIULE ALEX**  
*Alex apron*



**Misure / Dimensions**  
90x90 cm

65% Cotone / Cotton  
35% Poliestere / Polyester  
190 GR/MTQ

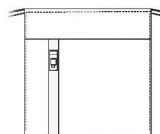
**Taglie / Sizes**  
TAGLIA UNICA / ONE SIZE

■ 1 portapenne / 1 penholder



Nero e rosso  
*Nero and red*

■ **Art. 15P08H616**  
■ **Art. 15P08H617**  
**GREMBIULE ALEX**  
*Alex apron*



**Misure / Dimensions**  
90x90 cm

100% Cotone / Cotton  
190 GR/MTQ

**Taglie / Sizes**  
TAGLIA UNICA / ONE SIZE

■ 1 portapenne / 1 penholder



■ **Art. 15P08H616**  
Bianco e pistacchio  
*White and pistachio*



■ **Art. 15P08H617**  
65% Poliestere / Polyester  
35% Cotone / Cotton



Nero e pistacchio / Black and pistachio  
Nero e bordeaux / Black and burgundy



■ Art. 11P08H17  
**GREMBIULE  
ALESSANDRO**  
*Alessandro apron*



**Misure / Dimensions**  
90x90 cm

60% Cotone / Cotton  
40% Poliestere / Polyester  
200 GR/MTQ

**Taglie / Sizes**  
TAGLIA UNICA / ONE SIZE

■ 1 portapenne / 1 penholder



EASY CARE



Grigio / Grey

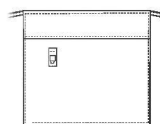


Bluette / Royal



Rosso / Red

■ Art. 13P08H354  
■ Art. 13P08H306  
**GREMBIULE  
ALESSANDRO**  
*Alessandro apron*



**Misure / Dimensions**  
90x90 cm

190 GR/MTQ

**Taglie / Sizes**  
TAGLIA UNICA / ONE SIZE

■ 1 portapenne / 1 penholder



■ Art. 13P08H354  
Bianco / White  
100% Cotone / Cotton

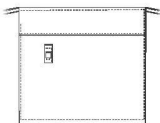


■ Art. 13P08H306  
Marrone / Brown  
65% Poliestere / Polyester  
35% Cotone / Cotton



■ Art. 13P08H306  
Nero / Black  
65% Poliestere / Polyester  
35% Cotone / Cotton

■ Art. 14P08H470  
**GREMBIULE  
ALESSANDRO**  
*Alessandro apron*



**Misure / Dimensions**  
90x90 cm

60% Cotone / Cotton  
40% Poliestere / Polyester  
200 GR/MTQ

**Taglie / Sizes**  
TAGLIA UNICA / ONE SIZE

■ 1 portapenne / 1 penholder



EASY CARE



Blu / Blue

■ Art. 8M1641  
■ Art. 15P01H441  
■ Art. 14P01H441  
■ Art. 14P01H443  
**GREMBIULE PRAGA**  
*Praga apron*



**Misure / Dimensions**  
90x67 cm

**Taglie / Sizes**  
TAGLIA UNICA / ONE SIZE

■ 1 tasca / 1 pocket



■ Art. 8M1641  
Nero / Black  
65% Poliestere / Polyester  
35% Cotone / Cotton  
200 GR/MTQ



**NEW** ■ Art. 15P01H441  
Moka  
65% Poliestere / Polyester  
35% Cotone / Cotton  
195 GR/MTQ



■ Art. 14P01H441  
Tortora / Toupé  
65% Poliestere / Polyester  
35% Cotone / Cotton  
195 GR/MTQ



■ Art. 14P01H441  
Prugna / Purple  
65% Poliestere / Polyester  
35% Cotone / Cotton  
195 GR/MTQ

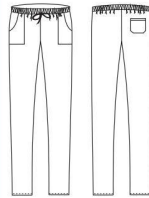


■ Art. 14P01H443  
Grigio / Grey  
56% Poliestere / Polyester  
42% Cotone / Cotton  
2% Elastan  
230 GR/MTQ





■ Art. 125/N  
**PANTALONE ALAN**  
Alan pants



65% Poliestere / Polyester  
35% Cotone / Cotton  
195 GR/MTQ

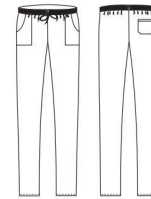
**Taglie / Sizes**  
XS ÷ 4XL

- 3 tasche / 3 pockets
- Elastico e coulisse  
Elasticated waistband  
with drawstring



Nero / Black

■ Art. 10M2061  
■ Art. 10M2061C  
**PANTALONE RODI**  
Rodi pants



60% Cotone / Cotton  
40% Poliestere / Polyester  
200 GR/MTQ

**Taglie / Sizes**  
XXS ÷ XXXL

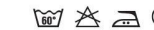
- 3 tasche / 3 pockets
- Elastico e coulisse  
Elasticated waistband  
with drawstring



■ Art. 10M2061  
Bianco / White



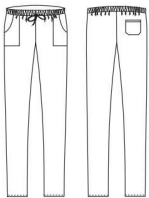
■ Art. 10M2061C  
Bluette / Royal



■ Art. 10M2061C  
Bordeaux / Burgundy



■ Art. 127  
**PANTALONE ALAN**  
Alan pants



**Colore / Color**  
Bianco e nero / Black and White

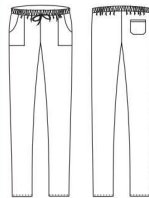
100% Cotone / Cotton  
235 GR/MTQ

**Taglie / Sizes**  
XS ÷ 4XL

- 3 tasche / 3 pockets
- Elastico e coulisse  
Elasticated waistband  
with drawstring



■ Art. 123  
**PANTALONE ALAN**  
Alan pants



100% Cotone / Cotton  
190 GR/MTQ

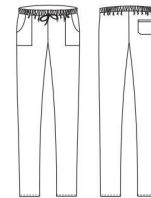
**Taglie / Sizes**  
XS ÷ 4XL

- 3 tasche / 3 pockets
- Elastico e coulisse  
Elasticated waistband  
with drawstring



Bianco / White

■ Art. 14P03P556  
**PANTALONE ALAN**  
Alan pants



60% Cotone / Cotton  
40% Poliestere / Polyester  
200 GR/MTQ

**Taglie / Sizes**  
XXS ÷ XXXL

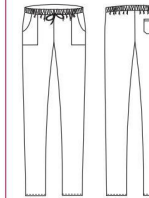
- 3 tasche / 3 pockets
- Elastico e coulisse  
Elasticated waistband  
with drawstring
- Slim fit



Blu / Blue



■ Art. 14P08P485  
**PANTALONE ALAN**  
Alan pants



56% Poliestere / Polyester  
42% Cotone / Cotton  
2% Elastan  
230 GR/MTQ

**Taglie / Sizes**  
XS ÷ XXXL

- 3 tasche / 3 pockets
- Elastico e coulisse  
Elasticated waistband  
with drawstring



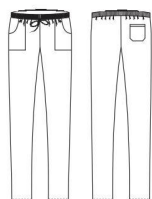
Grigio scuro / Dark grey





Gessato bordeaux / Burgundy

■ Art. 11P08P20  
**PANTALONE ENRICO**  
Enrico pants



**Colore / Color**  
Gessato nero / Black  
Gessato grigio / Grey

**100% Cotone / Cotton**  
145 GR/MTQ

**Taglie / Sizes**  
XS ÷ 5XL

- 3 tasche / 3 pockets
- Elastico e coulisse  
Elasticated waistband  
with drawstring
- Chiusura zip / Zip fly

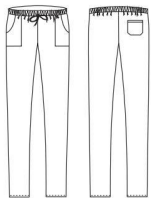


Gessato blu / Blue



Gessato bluette / Royal

■ Art. 14P03P477  
**PANTALONE ALAN**  
Alan pants



100% Cotone / Cotton  
175 GR/MTQ

Taglie / Sizes  
XS ÷ XXXL

- 3 tasche / 3 pockets
- Elastico e coulisse  
Elasticated waistband  
with drawstring



Kitchen



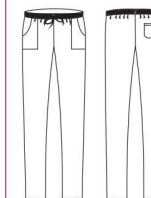
Menù bianco / White menu



Menù nero / Black menu

**NEW**

■ Art. 10M1532  
**PANTALONE ATENE**  
Atene pants



100% Cotone / Cotton  
175 GR/MTQ

Taglie / Sizes  
XS ÷ XXXL

- 3 tasche / 3 pockets
- Chiusura zip / Zip fly
- Elastico e coulisse  
Elasticated waistband  
with drawstring

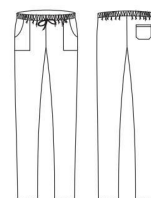


Pig



Peperoncino / Chili

■ Art. 15P08P334  
**PANTALONE ALAN**  
Alan pants



Colore / Color  
Sognatore

100% Cotone / Cotton  
175 GR/MTQ

Taglie / Sizes  
XXS ÷ XXXL

- 3 tasche / 3 pockets
- Elastico e coulisse  
Elasticated waistband  
with drawstring



*horeca & services*  
Gilet e grembiuli coordinati  
Matching waistcoats and aprons

■ **Art. 106/E**  
**GILET UOMO**  
Man's waistcoat



**Colore / Color**  
Nero / Black

100% Poliestere / Polyester

**Taglie / Sizes**  
XS ÷ XXXL

- Foderato / Lined
- 2 tasche / 2 pockets
- 4 bottoni / 4 buttons
- Fascette regolabili  
Adjustable buckle



UNCHANGE



Colori disponibili / Available colors



■ **Art. 106** Blu / Blue



■ **Art. 106BX** Bordeaux / Burgundy

*horeca & services*  
Gilet e grembiuli coordinati  
Matching waistcoats and aprons

■ **Art. 270/E**  
**GILET DONNA**  
Woman's waistcoat

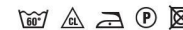


**Colore / Color**  
Nero / Black

100% Poliestere / Polyester

**Taglie / Sizes**  
XS ÷ XXL

- Sfoderato / Unlined
- 2 tasche / 2 pockets
- 4 bottoni / 4 buttons
- Fascette regolabili  
Adjustable buckle



UNCHANGE



Colori disponibili / Available colors



■ **Art. 270BX** Bordeaux / Burgundy



■ **Art. 270** Blu / Blue



■ **Art. 423**  
**GREMBIULE CORTO**  
*Short apron*

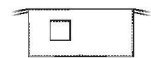
**Colore / Color** Nero / Black  
100% Poliestere / Polyester

**Taglie / Sizes**  
TAGLIA UNICA / ONE SIZE

■ 1 tasca / Pocket



**Misure / Sizes**  
cm 70x43



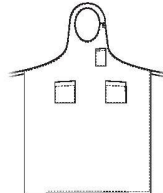
■ **Art. 424**  
**GREMBIULE LUNGO**  
*Long apron*

**Colore / Color** Nero / Black  
100% Poliestere / Polyester

**Taglie / Sizes**  
TAGLIA UNICA / ONE SIZE

■ 2 tasche / pockets

■ 1 portapenne / penholder  
■ Allacciatura collo regolabile  
con bottone  
Adjustable halter with button



■ **Art. 422**  
**GREMBIULE LUNGO**  
*Long apron*

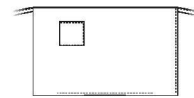
**Colore / Color** Nero / Black  
100% Poliestere / Polyester

**Taglie / Sizes**  
TAGLIA UNICA / ONE SIZE

■ 1 tasca / Pocket



**Misure / Sizes**  
cm 98x70



Colori disponibili / Available colors



■ **Art. 423**  
Bluette / Royal



■ **Art. 424**  
Bluette / Royal



■ **Art. 422**  
Bluette / Royal



■ **Art. 423BX**  
Bordeaux / Burgundy



■ **Art. 424BX**  
Bordeaux / Burgundy



■ **Art. 422BX**  
Bordeaux / Burgundy

**ACCESSORI ABBINATI**  
*Matching accessories*



■ **Art. 433** - Nero - Bluette / Black - Royal  
■ **Art. 433BX** - Bordeaux / Burgundy  
TAGLIA UNICA / ONE SIZE



■ **Art. 1846**  
TAGLIA UNICA / ONE SIZE



■ **Art. 1847**  
TAGLIA UNICA / ONE SIZE



■ **Art. 425** Nero - Bluette / Black - Royal  
■ **Art. Art. 425BX** Bordeaux / Burgundy

**Taglie / Sizes** S ÷ L

*horeca & services*  
Gilet e grembiuli coordinati  
Matching waistcoats  
and aprons



■ Art. 13P01E357  
**GILET FRANCISCA**  
*Francisca waistcoat*

Colore / Color 0010

100% Poliestere / Polyester

Taglia / Size XS ÷ XXL



- Foderato / Lined
- 2 tasche in contrasto / 2 contrasted pockets
- 4 bottoni / 4 buttons
- Fascette regolabili / Adjustable buckle



■ Art. 13P01E356  
**GILET MIGUEL**  
*Miguel waistcoat*

Colore / Color 0010

100% Poliestere / Polyester

Taglia / Size S ÷ XXL



- Foderato / Lined
- 2 tasche in contrasto / 2 contrasted pockets
- 4 bottoni / 4 buttons
- Fascette regolabili / Adjustable buckle
- Allacciatura collo regolabile con velcro / Adjustable halter with velcro



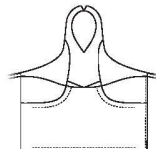
■ Art. 13P01H317  
**GREMBIULE RAISSA**  
*Raissa apron*

Colore / Color 0010

100% Poliestere / Polyester

Taglia / Size  
TAGLIA UNICA / ONE SIZE

- 2 tasche / 2 pockets
- Allacciatura collo regolabile con velcro / Adjustable halter with velcro



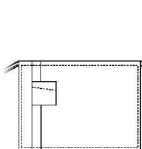
■ Art. 13P01H319  
**GREMBIULE BOB**  
*Bob apron*

Colore / Color 0010

100% Poliestere / Polyester

Taglia / Size  
TAGLIA UNICA / ONE SIZE

- 1 tasca / 1 pocket



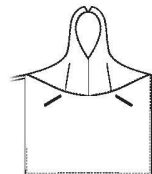
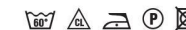
■ Art. 13P01H321  
**GREMBIULE DEMIDOFF**  
*Demidoff apron*

Colore / Color 0010

100% Poliestere / Polyester

Taglia / Size  
TAGLIA UNICA / ONE SIZE

- 2 tasche / 2 pockets
- Allacciatura collo regolabile con velcro / Adjustable halter with velcro



Schiena in raso  
Satin backside

**ACCESSORI ABBINATI**  
*Matching accessories*

Colore / Color Nero / Black



■ Art. 433  
TAGLIA UNICA / ONE SIZE



■ Art. 1846  
TAGLIA UNICA / ONE SIZE



■ Art. 1847  
TAGLIA UNICA / ONE SIZE



■ Art. 425  
TAGLIA UNICA / ONE SIZE

horeca & services  
Gilet e grembiuli coordinati  
Matching waistcoats  
and aprons



■ Art. 11P01E77  
**GILET FRANCISCA**  
Francisca waistcoat

Colore / Color P170

100% Poliestere / Polyester

Taglia / Size XS ÷ XXL



- Foderato / Lined
- 2 tasche in contrasto / 2 contrasted pockets
- 4 bottoni / 4 buttons
- Fascette regolabili / Adjustable buckle



■ Art. 11P01E76  
**GILET MIGUEL**  
Miguel waistcoat

Colore / Color P170

100% Poliestere / Polyester

Taglia / Size S ÷ XXL



- Foderato / Lined
- 2 tasche in contrasto / 2 contrasted pockets
- 4 bottoni / 4 buttons
- Fascette regolabili / Adjustable buckle



■ Art. 11P01H26  
**GREMBIULE BOB**  
Bob apron

Colore / Color P170

100% Poliestere / Polyester

Taglia / Size  
TAGLIA UNICA / ONE SIZE

- 1 tasca / 1 pocket



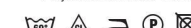
■ Art. 11P01H25  
**GREMBIULE RAISSA**  
Raissa apron

Colore / Color P170

100% Poliestere / Polyester

Taglia / Size  
TAGLIA UNICA / ONE SIZE

- 2 tasche / 2 pockets
- Allacciatura collo regolabile con velcro  
Adjustable halter with velcro



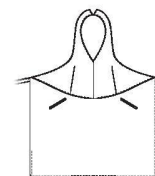
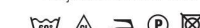
■ Art. 11P01H27  
**GREMBIULE DEMIDOFF**  
Demidoff apron

Colore / Color P170

100% Poliestere / Polyester

Taglia / Size TAGLIA UNICA / ONE SIZE

- 1 tasca / 1 pocket
- Allacciatura collo regolabile con velcro  
Adjustable halter with velcro



Schiena in raso  
Satin backside

**ACCESSORI ABBINATI**  
Matching accessories

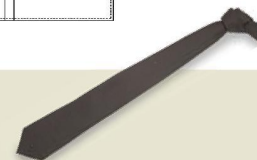
Colore / Color P170



■ Art. 517  
TAGLIA UNICA / ONE SIZE



■ Art. 519  
TAGLIA UNICA / ONE SIZE



■ Art. 509  
TAGLIA UNICA / ONE SIZE



■ Art. 1847  
TAGLIA UNICA / ONE SIZE



■ Art. 400/R  
Taglie / Sizes S ÷ L



*horeca & services*  
Gilet e grembiuli coordinati  
Matching waistcoats  
and aprons



■ **Art. 1542**  
**GILET UOMO**  
*Man's waistcoat*

Colore / Color 009

100% Poliestere / Polyester

Taglia / Size S ÷ XXL

- Foderato / Lined
- Doppia asola / Cufflink
- 2 tasche / 2 pockets
- 4 bottoni / 4 buttons
- Fascette regolabili / Adjustable buckle



■ **Art. 1541**  
**GILET DONNA**  
*Woman's waistcoat*

Colore / Color 009

100% Poliestere / Polyester

Taglia / Size XS ÷ XXL

- Sfoderato / Unlined
- 2 tasche / 2 pockets
- 4 bottoni / 4 buttons
- Fascette regolabili / Adjustable buckle



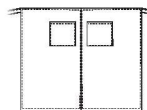
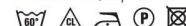
■ **Art. 1539**  
**GREMBIULE CON SPACCO**  
*Long apron*

Colore / Color 009

100% Poliestere / Polyester

Taglia / Size  
TAGLIA UNICA / ONE SIZE

- Con spacco / With split
- 2 tasche / 2 pockets



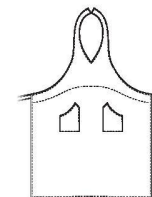
■ **Art. 1538**  
**GREMBIULE LUNGO**  
*Long apron*

Colore / Color 009

100% Poliestere / Polyester

Taglia / Size TAGLIA UNICA / ONE SIZE

- 2 tasche / 2 pockets
- Allacciatura collo regolabile con velcro  
Adjustable halter with velcro



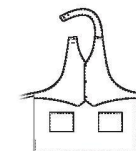
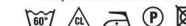
■ **Art. 1636**  
**GREMBIULE DONNA**  
*Woman's apron*

Colore / Color 009

100% Poliestere / Polyester

Taglia / Size TAGLIA UNICA / ONE SIZE

- 2 tasche / 2 pockets
- Allacciatura collo regolabile  
con 2 bottoni  
Adjustable halter with 2 buttons



**ACCESSORI ABBINATI**  
*Matching accessories*

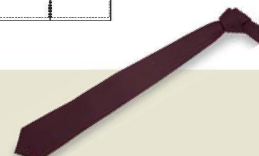
Colore / Color 009



■ **Art. 434**  
TAGLIA UNICA / ONE SIZE



■ **Art. 1846**  
TAGLIA UNICA / ONE SIZE



■ **Art. 509**  
TAGLIA UNICA / ONE SIZE



■ **Art. 1847**  
TAGLIA UNICA / ONE SIZE



■ **Art. 400/R**  
Taglie / Sizes S ÷ L

*horeca & services*  
Gilet e grembiuli coordinati  
Matching waistcoats  
and aprons

EASY CARE



EASY CARE



■ Art. 14P01E419  
**GILET CHERIE**  
Cherie waistcoat

Colore / Color 322

100% Poliestere / Polyester

Taglia / Size XS ÷ XXL

- Foderato / Lined
- 2 tasche / 2 pockets
- 4 bottoni / 4 buttons
- Fascette regolabili / Adjustable buckle



■ Art. 14P01E418  
**GILET MIGUEL**  
Miguel waistcoat

Colore / Color 322

100% Poliestere / Polyester

Taglia / Size S ÷ XXL

- Foderato / Lined
- 2 tasche / 2 pockets
- 4 bottoni / 4 buttons
- Fascette regolabili / Adjustable buckle



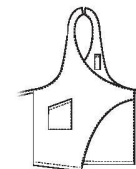
■ Art. 14P01H422  
**GREMBIULE LORENZO**  
Lorenzo apron

Colore / Color  
322 - Marrone / Brown

65% Poliestere / Polyester  
35% Cotone / Cotton

Taglia / Size TAGLIA UNICA / ONE SIZE

- 1 tasca / 1 pocket
- Taschino porta penna / Pen pocket
- Allacciatura collo regolabile con velcro  
Adjustable halter with velcro



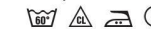
■ Art. 14P01H423  
**GREMBIULE FRIDA**  
Frida apron

Colore / Color  
322 - Marrone / Brown

65% Poliestere / Polyester  
35% Cotone / Cotton

Taglia / Size TAGLIA UNICA / ONE SIZE

- 1 tasca / 1 pocket
- Taschino porta penna / Pen pocket
- Allacciatura collo regolabile con 3 bottoni  
Adjustable halter with 3 buttons



**ACCESSORI ABBINATI**  
Matching accessories

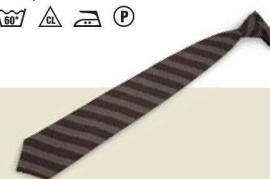
Colore / Color 322



■ Art. 14P05I427  
TAGLIA UNICA / ONE SIZE



■ Art. 14P05I428  
TAGLIA UNICA / ONE SIZE



■ Art. 14P05I424  
TAGLIA UNICA / ONE SIZE



■ Art. 14P05I425  
TAGLIA UNICA / ONE SIZE



■ Art. 14P05I426  
Taglie / Sizes S ÷ L

horeca & services  
Gilet e grembiuli coordinati  
Matching waistcoats  
and aprons

NEW



EASY CARE



EASY CARE



EASY CARE



■ Art. 15P01E420  
**GILET MIGUEL**  
Miguel waistcoat

Colore / Color 960

50% Poliestere / Polyester  
50% Cotone / Cotton

Taglia / Size S ÷ XXL

- Foderato / Lined
- 2 tasche / 2 pockets
- 4 bottoni / 4 buttons
- Fascette regolabili / Adjustable buckle



■ Art. 15P01E421  
**GILET CHERIE**  
Cherie waistcoat

Colore / Color 960

50% Poliestere / Polyester  
50% Cotone / Cotton

Taglia / Size XS ÷ XXL

- Foderato / Lined
- 2 tasche / 2 pockets
- 4 bottoni / 4 buttons
- Fascette regolabili / Adjustable buckle



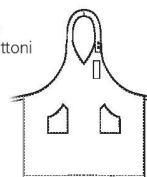
■ Art. 15P01H608  
**GREMBIULE UNISEX**  
Unisex apron

Colore / Color 960

50% Poliestere / Polyester  
50% Cotone / Cotton

Taglia / Size TAGLIA UNICA / ONE SIZE

- 2 tasche / 2 pockets
- Taschino porta penna  
Pen pocket
- Allacciatura al collo  
regolabile con 2 bottoni  
Adjustable halter  
with 2 buttons



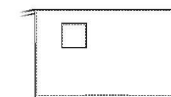
■ Art. 15P01H610  
**GREMBIULE FRANCESE**  
French apron

Colore / Color 960

50% Poliestere / Polyester  
50% Cotone / Cotton

Taglia / Size TAGLIA UNICA / ONE SIZE

- 1 tasca / 1 pocket



■ Art. 15P01H609  
**GREMBIULE ISABEL**  
Isabel apron

Colore / Color 960

50% Poliestere / Polyester  
50% Cotone / Cotton

Taglia / Size TAGLIA UNICA / ONE SIZE

- 1 tasca / 1 pocket
- Taschino porta penna  
Pen pocket
- Allacciatura al collo  
regolabile con 2 bottoni  
Adjustable halter  
with 2 buttons



**ACCESSORI ABBINATI**  
Matching accessories

Colore / Color 960



■ Art. 15P05I520  
TAGLIA UNICA / ONE SIZE



■ Art. 15P05I236  
TAGLIA UNICA / ONE SIZE



■ Art. 15P05I552  
TAGLIA UNICA / ONE SIZE



■ Art. 15P05I225  
TAGLIA UNICA / ONE SIZE



■ Art. 15P05I235  
Taglie / Sizes S ÷ L

horeca & services  
Gilet e grembiuli coordinati  
Matching waistcoats  
and aprons

NEW



EASY CARE



EASY CARE



EASY CARE



■ Art. 15P01E420  
**GILET MIGUEL**  
Miguel waistcoat

Colore / Color 962

50% Poliestere / Polyester  
50% Cotone / Cotton

Taglia / Size S ÷ XXL



- Foderato / Lined
- 2 tasche / 2 pockets
- 4 bottoni / 4 buttons
- Fascette regolabili / Adjustable buckle



■ Art. 15P01E421  
**GILET CHERIE**  
Cherie waistcoat

Colore / Color 962

50% Poliestere / Polyester  
50% Cotone / Cotton

Taglia / Size XS ÷ XXL



- Foderato / Lined
- 2 tasche / 2 pockets
- 4 bottoni / 4 buttons
- Fascette regolabili / Adjustable buckle



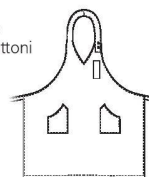
■ Art. 15P01H608  
**GREMBIULE UNISEX**  
Unisex apron

Colore / Color 962

50% Poliestere / Polyester  
50% Cotone / Cotton

Taglia / Size TAGLIA UNICA / ONE SIZE

- 2 tasche / 2 pockets
- Taschino porta penna  
Pen pocket
- Allacciatura al collo  
regolabile con 2 bottoni  
Adjustable halter  
with 2 buttons



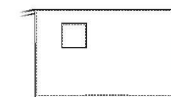
■ Art. 15P01H610  
**GREMBIULE FRANCESE**  
French apron

Colore / Color 962

50% Poliestere / Polyester  
50% Cotone / Cotton

Taglia / Size TAGLIA UNICA / ONE SIZE

- 1 tasca / 1 pocket



■ Art. 15P01H609  
**GREMBIULE ISABEL**  
Isabel apron

Colore / Color 962

50% Poliestere / Polyester  
50% Cotone / Cotton

Taglia / Size TAGLIA UNICA / ONE SIZE

- 1 tasca / 1 pocket
- Taschino porta penna  
Pen pocket
- Allacciatura al collo  
regolabile con 2 bottoni  
Adjustable halter  
with 2 buttons



**ACCESSORI ABBINATI**  
Matching accessories

Colore / Color 962



■ Art. 15P05I520  
TAGLIA UNICA / ONE SIZE



■ Art. 15P05I236  
TAGLIA UNICA / ONE SIZE



■ Art. 15P05I552  
TAGLIA UNICA / ONE SIZE



■ Art. 15P05I225  
TAGLIA UNICA / ONE SIZE



■ Art. 15P05I235  
Taglie / Sizes S ÷ L

*horeca & services*

Grembiuli coordinati  
Matching waistcoats  
and aprons



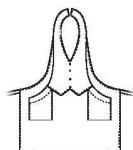
■ **Art. 82**  
**GREMBIULE**  
*Apron*

**Colore / Color**  
01 Bordeaux / Burgundy

**100%** Poliestere / Polyester

**Taglia / Size** TAGLIA UNICA / ONE SIZE

- 4 bottoni decorativi / 4 decorative buttons
- 2 tasche / 2 pockets
- Allacciatura collo regolabile con velcro  
Adjustable halter with velcro



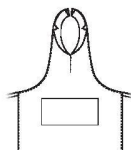
■ **Art. 957**  
**GREMBIULE DONNA**  
*Woman's apron*

**Colore / Color**  
01 Bordeaux / Burgundy

**100%** Poliestere / Polyester

**Taglia / Size**  
TAGLIA UNICA / ONE SIZE

- 1 tascone / 1 big pocket
- Allacciatura collo regolabile con velcro  
Adjustable halter with velcro



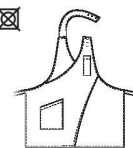
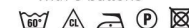
■ **Art. 14P01H430**  
**GREMBIULE GIULIETTA**  
*Giulietta apron*

**Colore / Color** 01 Bordeaux / Burgundy

**100%** Poliestere / Polyester

**Taglia / Size** TAGLIA UNICA / ONE SIZE

- 1 tasca / 1 pocket
- Taschino porta penna / Pen pocket
- Allacciatura al collo regolabile con 3 bottoni  
Adjustable halter with 3 buttons



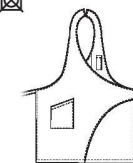
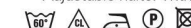
■ **Art. 14P01H429**  
**GREMBIULE NICOLA**  
*Nicola apron*

**Colore / Color** 01 Bordeaux / Burgundy

**100%** Poliestere / Polyester

**Taglia / Size** TAGLIA UNICA / ONE SIZE

- 1 tasca / 1 pocket
- Taschino porta penna / Pen pocket
- Allacciatura collo regolabile con velcro  
Adjustable halter with velcro



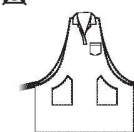
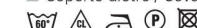
■ **Art. 14P01H501**  
**SCAMICIATO ARIANNA**  
*Arianna pinafore*

**Colore / Color** 01 Bordeaux / Burgundy

**100%** Poliestere / Polyester

**Taglia / Size** TAGLIA UNICA / ONE SIZE

- Collo polo / Polo neck
- 3 tasche / 3 pockets
- Coperto dietro / Covered back side



**ACCESSORI ABBINATI**  
*Matching accessories*

**Colore / Color** 01



■ **Art. 411**  
TAGLIA UNICA / ONE SIZE



■ **Art. 510**  
TAGLIA UNICA / ONE SIZE



■ **Art. 1847**  
TAGLIA UNICA / ONE SIZE



■ **Art. 400/R**  
Taglie / Sizes S ÷ L



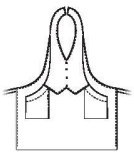
Coperto dietro  
Covered back side



■ **Art. 82**  
**GREMBIULE**  
*Apron*  
**Colore / Color** 175 Nero / Black  
**100% Poliestere / Polyester**  
**Taglia / Size** TAGLIA UNICA / ONE SIZE

- 4 bottoni decorativi / 4 decorative buttons
- 2 tasche / 2 pockets
- Allacciatura collo regolabile con velcro / Adjustable halter with velcro

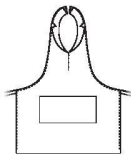
☰ ☒ ☑ ☒ ☒ ☒



■ **Art. 957**  
**GREMBIULE DONNA**  
*Woman's apron*  
**Colore / Color** 175 Nero / Black  
**100% Poliestere / Polyester**  
**Taglia / Size** TAGLIA UNICA / ONE SIZE

- 1 tascone / 1 big pocket
- Allacciatura collo regolabile con velcro / Adjustable halter with velcro

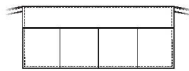
☰ ☒ ☑ ☒ ☒ ☒



■ **Art. 871**  
**GREMBIULE CORTO**  
*Short apron*  
**Colore / Color** 175 Nero / Black  
**100% Poliestere / Polyester**  
**Taglia / Size** TAGLIA UNICA / ONE SIZE

- 4 tasche / 4 pockets

☰ ☒ ☑ ☒ ☒ ☒



■ **Art. 14P01H430**  
**GREMBIULE GIULIETTA**  
*Giulietta apron*  
**Colore / Color** 175 Nero / Black  
**100% Poliestere / Polyester**  
**Taglia / Size** TAGLIA UNICA / ONE SIZE

- 1 tasca / 1 pocket
- Taschino porta penna / Pen pocket
- Allacciatura collo regolabile con 3 bottoni / Adjustable halter with 3 buttons

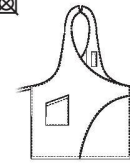
☰ ☒ ☑ ☒ ☒ ☒



■ **Art. 14P01H429**  
**GREMBIULE NICOLA**  
*Nicola apron*  
**Colore / Color** 175 Nero / Black  
**100% Poliestere / Polyester**  
**Taglia / Size** TAGLIA UNICA / ONE SIZE

- 1 tasca / 1 pocket
- Taschino porta penna / Pen pocket
- Allacciatura collo regolabile con velcro / Adjustable halter with velcro

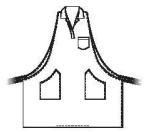
☰ ☒ ☑ ☒ ☒ ☒



■ **Art. 14P01H501**  
**SCAMICIATO ARIANNA**  
*Arianna pinafore*  
**Colore / Color** 175 Nero / Black  
**100% Poliestere / Polyester**  
**Taglia / Size** TAGLIA UNICA / ONE SIZE

- Collo polo / Polo neck
- 3 tasche / 3 pockets
- Coperto dietro / Covered back side

☰ ☒ ☑ ☒ ☒ ☒



**ACCESSORI ABBINATI**  
*Matching accessories*

**Colore / Color** 175



■ **Art. 411**  
TAGLIA UNICA / ONE SIZE



■ **Art. 510**  
TAGLIA UNICA / ONE SIZE



■ **Art. 1847**  
TAGLIA UNICA / ONE SIZE



■ **Art. 400/R**  
Taglie / Sizes S ÷ L



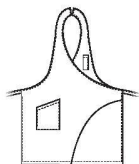
■ Art. 14P01H431  
**GREMBIULE NICOLA**  
*Nicola apron*

**Colore / Color**  
Arancione / Nero - Orange / Black

100% Poliestere / Polyester

**Taglie / Sizes**  
TAGLIA UNICA / ONE SIZE

- 1 tasca / 1 pocket
- Taschino porta penna / Pen pocket
- Allacciatura collo regolabile con velcro / Adjustable halter with velcro



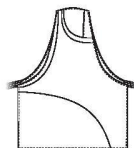
■ Art. 14P01H432  
**SCAMICIATO AGATA**  
*Agata pinafore*

**Colore / Color**  
Arancione / Nero - Orange / Black

100% Poliestere / Polyester

**Taglie / Sizes**  
TAGLIA UNICA / ONE SIZE

- 1 grande tasca / 1 big pocket
- Coperto dietro / Covered back side



■ Art. 14P01H431

■ Art. 14P01H432



*horeca & services*  
Grembiuli coordinati  
Aprons

**Colori disponibili**  
*Available colors*

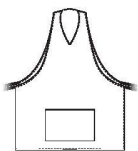
Giallo / Marrone  
*Yellow / Brown*



Coperto dietro  
*Covered back side*

Pistachio / Blu  
*Pistachio / Blue*

■ Art. 10M2057 / 9M1913  
**SCAMICIATO LONDON**  
London Pinafore



Colore / Color Viola / Violet

100% Poliestere / Polyester

Taglie / Sizes  
TAGLIA UNICA / ONE SIZE

- 1 grande tasca / 1 big pocket
- Coperto dietro / Covered back side



■ Art. 10M2058  
**CAPPELLO ABBINATO**

Cappello abbinato,  
disponibile nelle stesse  
varianti colore dei  
grembiuli.

Matching hat, available  
in same apron's colors

Taglie / Sizes  
TAGLIA UNICA / ONE SIZE



Colori disponibili  
Available colors



■ Art. 10M2057  
Bordeaux / Burgundy

Coperto dietro  
Covered back side



■ Art. 10M2057  
Nero / Black



■ Art. 10M2057  
Grigio / Grey



■ Art. 9M1913  
Rosso / Red



■ Art. 9M1913  
Arancione / Orange



■ Art. 9M1913  
Giallo / Yellow



■ Art. 9M1913  
Pistacchio / Pistachio

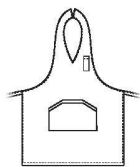


NEW ■ Art. 15P01H612  
Bianco / White





■ Art. 10M2055 / 9M1914  
**GREMBIULE SCOTLAND**  
Scotland apron



100% Poliestere / Polyester

**Taglie / Sizes**  
TAGLIA UNICA / ONE SIZE

- 1 grande tasca / 1 big pocket
- 1 taschino porta penne / 1 pen pocket
- Allacciatura collo regolabile con velcro / Adjustable halter with velcro



■ Art. 10M2058  
**CAPPELLO ABBINATO**

Cappello abbinato,  
disponibile nelle stesse  
**varianti colore** dei  
grembiuli.

Matching hat, available  
in same apron's colors

**Taglie / Sizes**  
TAGLIA UNICA / ONE SIZE



**Colori disponibili**  
Available colors



■ Art. 10M2055  
Bordeaux / Burgundy



■ Art. 10M2055  
Nero / Black



■ Art. 10M2055  
Grigio / Grey



■ Art. 9M1914  
Rosso / Red



■ Art. 9M1914  
Arancione / Orange



■ Art. 9M1914  
Giallo / Yellow



■ Art. 9M1914  
Pistacchio / Pistachio



■ Art. 9M1914  
Viola / Violet



horeca & services  
Grembiuli coordinati  
Aprons

■ Art. 9M1917 / 10M2056  
**GREMBIULE CHARLIE**  
Charlie apron



100% Poliestere / Polyester

Taglie / Sizes  
TAGLIA UNICA / ONE SIZE

■ 4 tasche / 4 pockets



■ Art. 10M2058  
**CAPPELLO ABBINATO**

Cappello abbinato,  
disponibile nelle stesse  
**varianti colore** dei  
grembiuli.

Matching hat, available  
in same apron's color

Taglie / Sizes  
TAGLIA UNICA / ONE SIZE



Colori disponibili Available colors



■ Art. 9M1917  
Arancione / Orange



■ Art. 9M1917  
Rosso / Red



■ Art. 9M1917  
Giallo / Yellow



■ Art. 9M1917  
Viola / Violet



■ Art. 9M1917  
Pistacchio / Pistachio



■ Art. 10M2056  
Nero / Black



■ Art. 10M2056  
Grigio / Grey



■ Art. 10M2056  
Bordeaux / Burgundy

horeca & services  
Grembiuli coordinati  
Aprons



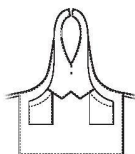
■ **Art. 15P01H618**  
**GREMBIULE GIANNI**  
*Gianni apron*

**Colore / Color**  
Nero / Bianco - Black / White

**100%** Poliestere / Polyester

**Taglie / Sizes** TAGLIA UNICA / ONE SIZE

- 2 tasche / 2 pockets
- Allacciatura al collo regolabile con velcro  
Adjustable halter with velcro



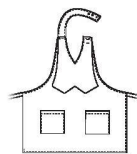
■ **Art. 15P01H619**  
**GREMBIULE SILVIA**  
*Silvia apron*

**Colore / Color**  
Nero / Bianco - Black / White

**100%** Poliestere / Polyester

**Taglie / Sizes** TAGLIA UNICA / ONE SIZE

- 2 tasche / 2 pockets
- Allacciatura al collo regolabile con 3 bottoni  
Adjustable halter with 3 buttons



■ **Art. 15P01H618 - GREMBIULE GIANNI**  
*Gianni apron*

**Colori disponibili**  
*Available colors*

Nero e rosso  
*Black and red*



Nero e giallo  
*Black and yellow*



Nero e grigio  
*Black and grey*



Nero e bordeaux  
*Black and burgundy*





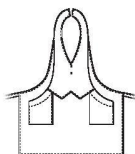
**Art. 15P01H618**  
**GREMBIULE GIANNI**  
*Gianni apron*

**Colore / Color**  
Nero / Bordeaux - Black / Burgundy

**100%** Poliestere / Polyester

**Taglie / Sizes** TAGLIA UNICA / ONE SIZE

- 2 tasche / 2 pockets
- Allacciatura al collo regolabile con velcro  
Adjustable halter with velcro



**Art. 15P01H619**  
**GREMBIULE SILVIA**  
*Silvia apron*

**Colore / Color**  
Nero / Bianco - Black / White

**100%** Poliestere / Polyester

**Taglie / Sizes** TAGLIA UNICA / ONE SIZE

- 2 tasche / 2 pockets
- Allacciatura al collo regolabile con 3 bottoni  
Adjustable halter with 3 buttons



**Art. 15P01H619 - GREMBIULE SILVIA**  
*Silvia apron*

**Colori disponibili**  
*Available colors*



Nero e rosso  
Black and red



Nero e giallo  
Black and yellow



Nero e grigio  
Black and grey

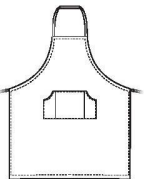


Nero e bianco  
Black and white

horeca & services

Grembiuli coordinati  
Aprons

■ Art. 11P08H83  
**GREMBIULE CON PETTORINA**  
Bib apron



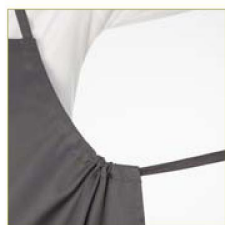
**Colore / Color**  
Grigio / Grey

60% Cotone / Cotton  
40% Poliestere / Polyester  
200 Gr/Mtq

**Taglie / Sizes**  
TAGLIA UNICA / ONE SIZE



EASY CARE



Allacciatura regolabile  
Adjustable lacing

Colori disponibili  
Available colors

horeca & services  
Grembiuli coordinati  
Aprons



■ Art. 11P08H83  
Nero / Black



■ Art. 11P08H83  
Grigio / Grey



■ Art. 11P08H83  
Bordeaux / Burgundy



■ Art. 11P08H83  
Rosso / Red



■ Art. 11P08H83  
Bluette / Royal



■ Art. 11P08H83B  
Bianco / White

*horeca & services*

Grembiuli coordinati  
Aprons



■ Art. 14P01H444  
**GREMBIULE ZAGABRIA**  
*Zagabria apron*

**Colore / Color**  
Marrone / Brown

55% Lino / Linen  
45% Cotone / Cotton

**Taglie / Sizes**  
TAGLIA UNICA / ONE SIZE

■ 1 tasca / 1 pocket



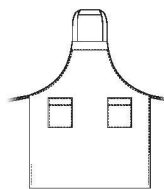
■ Art. 14P01H445  
**GREMBIULE CON PETTORINA**  
*Bib apron*

**Colore / Color**  
Marrone / Brown

55% Lino / Linen  
45% Cotone / Cotton

**Taglie / Sizes**  
TAGLIA UNICA / ONE SIZE

■ 2 tasche / 2 pockets



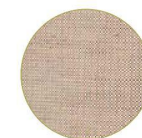
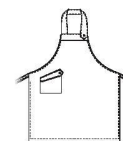
■ Art. 14P02H457  
**GREMBIULE ELETTRA**  
*Elettra apron*

**Colore / Color**  
Marrone / Brown

55% Lino / Linen  
45% Cotone / Cotton

**Taglie / Sizes**  
TAGLIA UNICA / ONE SIZE

■ 1 tasca / 1 pocket



■ Art. 14P01H444  
Beige / Beige



■ Art. 14P01H445  
Beige / Beige



■ Art. 14P02H457  
Beige / Beige



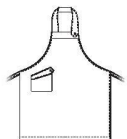
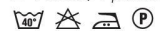
■ **Art. 15P01H455 NEW**  
**GRAMBIULE ELETTRA**  
*Elettra apron*

Colore / Color Moka

65% Poliestere / Polyester  
 35% Cotone / Cotton

Taglia / Size  
 TAGLIA UNICA / ONE SIZE

■ 1 tasca / 1 pocket



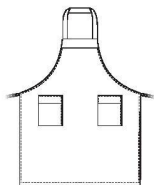
■ **Art. 15P01H440 NEW**  
**GRAMBIULE CON PETTORINA**  
*Bib apron*

Colore / Color Moka

65% Poliestere / Polyester  
 35% Cotone / Cotton

Taglia / Size  
 TAGLIA UNICA / ONE SIZE

■ 2 tasche / 2 pockets



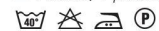
■ **Art. 15P01H441 NEW**  
**GRAMBIULE PRAGA**  
*Praga apron*

Colore / Color Moka

65% Poliestere / Polyester  
 35% Cotone / Cotton

Taglia / Size  
 TAGLIA UNICA / ONE SIZE

■ 1 tasca / 1 pocket



Colori disponibili  
 Available colors

*horeca & services*  
 Grembiuli coordinati  
 Aprons



■ **Art. 14P02H455**  
 Tortora / Toupé



■ **Art. 14P01H440**  
 Tortora / Toupé



■ **Art. 14P01H441**  
 Tortora / Toupé



■ **Art. 14P02H455**  
 Prugna / Purple



■ **Art. 14P01H440**  
 Prugna / Purple



■ **Art. 14P01H441**  
 Prugna / Purple

■ Art. 13P09R320  
**CAMICE MAYSA**  
Maysa coat



**Colore / Color**  
Azzurro / Light blue

65% Poliestere / Polyester  
35% Cotone / Cotton

**Taglie / Sizes**  
XS ÷ XXXL

■ 3 tasche / 3 pockets



Colori disponibili / Available colors



**Colore / Color**  
Rosa / Pink



**Colore / Color**  
Lilla / Lilac

■ Art. 11P09R24  
**CAMICE ROSALIA**  
Rosalia coat



**Colore / Color**  
Nero / Black

65% Poliestere / Polyester  
35% Cotone / Cotton

**Taglie / Sizes**  
XS ÷ XXL

■ Collo e polsi staccabili  
Removable neck and cuff  
■ 2 tasche / 2 pockets





*horeca & services*  
Camicci donna  
Woman coats

■ Art. 14P09R450  
**CAMICE NINFEA M/L**  
Ninfea coat L/S



**Colore / Color**  
Blu / Blue

100% Cotone / Cotton

**Taglie / Sizes**  
XS ÷ XXXL

■ 2 tasche / 2 pockets



**Colori disponibili**  
Available colors



**Colore / Color**  
Bordeaux / Burgundy



*horeca & services*  
Camicci donna  
Woman coats

■ Art. 14P09R451  
**CAMICE NINFEA M/C**  
Ninfea coat S/S



**Colore / Color**  
Beige / Beige

100% Cotone / Cotton

**Taglie / Sizes**  
XS ÷ XXXL

■ 2 tasche / 2 pockets



**Colori disponibili**  
Available colors



**Colore / Color**  
Nero / Black

■ Art. 12P09R211  
**CAMICE NINFEA M/C**  
Ninfea coat S/S



**Colore / Color**  
Azzurro / Light blue

**100%** Cotone / Cotton

**Taglie / Sizes**  
XS ÷ XXXL

■ 2 tasche / 2 pockets



**Colori disponibili**  
Available colors



■ Art. 12P05H265  
**GREMBIULE LEDA**  
Leda apron

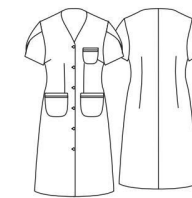
**Colore / Color**  
Azzurro / Light blue  
Boudeaux / Burgundy

**100%** Cotone / Cotton

**Taglie / Sizes**  
TAGLIA UNICA / ONE SIZE



■ Art. 13P09R322  
**CAMICE SABINA**  
Sabina coat



**Colore / Color**  
Lilla / Lilac

**65%** Poliestere / Polyester  
**35%** Cotone / Cotton

**Taglie / Sizes**  
XS ÷ XXXL

■ 3 tasche / 3 pockets  
■ Manica ad aletta  
Flap sleeve



**Colori disponibili**  
Available colors



**Colore / Color**  
Azzurro / Light blue

**Colore / Color**  
Rosa / Pink

*horeca & services*  
Camicie donna  
Woman coats

■ **Art. 11P09R23**  
**CAMICE NINFEA**  
Ninfea coat



**Colore / Color**  
Grigio / Grey

**100%** Cotone / Cotton

**Taglie / Sizes**  
XS ÷ XXL

■ 2 tasche / 2 pockets



**Colori disponibili**  
Available colors



**Colore / Color**  
Azzurro / Light blue



*horeca & services*  
Camicie donna  
Woman coats

■ **Art. 11P09R22**  
**CAMICE NINFEA**  
Ninfea coat



**Colore / Color**  
Nero / Black

**65%** Poliestere / Polyester  
**35%** Cotone / Cotton

**Taglie / Sizes**  
XS ÷ XXL

■ 2 tasche / 2 pockets



**Colori disponibili**  
Available colors



■ **Art. 14P09R449**  
Lilla / Lilac



*horeca & services*  
Camicie donna oversize  
Oversize woman coats

■ **Art. 13P09R330**  
**CAMICE ROSSELLA**  
*Rossella coat*



oversize

**Colore / Color**  
Bordeaux / Burgundy

**65%** Poliestere / Polyester  
**35%** Cotone / Cotton

**Taglie / Sizes**  
XS ÷ 4XL

- 3 tasche / 3 pockets
- Manica ad aletta / Flap sleeve
- Ampia vestibilità / Large fit



**Colori disponibili**  
*Available colors*



**Colore / Color**  
Blu / Blue



oversize



■ **Art. 204/B**  
**CAMICE MARIA**  
*Maria coat*



**Colore / Color**  
Bianco / White

**100%** Cotone / Cotton

**Taglie / Sizes**  
XS ÷ XXXL

- 3 tasche / 3 pockets
- Manica ad aletta / Flap sleeve
- Ampia vestibilità / Large fit



■ **Art. 11P09R88**  
**CAMICE EMMA**  
*Emma coat*



**Colore / Color**  
Bianco / White

**65%** Poliestere / Polyester  
**35%** Cotone / Cotton

**Taglie / Sizes**  
XS ÷ 5XL

- 2 tasche / 2 pockets
- Manica ad aletta / Flap sleeve
- Ampia vestibilità / Large fit



horeca & services  
Casacche donna  
Woman tunics



Manica arrotolabile  
Adjustable sleeve

■ Art. 13P09K316  
**CASACCA DYKA**  
Dyka tunic



**Colore / Color**  
Rosa / Pink

65% Poliestere / Polyester  
35% Cotone / Cotton

**Taglie / Sizes**  
XS - XXXL

■ 2 tasche / 2 pockets  
■ Manica arrotolabile  
Adjustable sleeve



**Colori disponibili / Available colors**



**Colore / Color**  
Azzurro / Light blue



**Colore / Color**  
Lilla / Lilac



**Colore / Color**  
Rosa / Pink



**Colore / Color**  
Bianco / White

horeca & services  
Casacche donna  
Woman tunics

■ Art. 14P09K454  
**CASACCA DIKA**  
Dika tunic



**Colore / Color**  
Grigio / Grey

**65% Poliestere / Polyester**  
**35% Cotone / Cotton**

**Taglie / Sizes**  
XS ÷ XXXL

- 2 tasche / 2 pockets
- manica arrotolabile  
adjustable sleeve



Manica arrotolabile  
Adjustable sleeve

**Colori disponibili**  
Available colors



**Colore / Color**  
Rosso / Red



horeca & services  
Casacche donna  
Woman tunics

■ Art. 14P09K453  
**CASACCA OLGA**  
Olga tunic



**Colore / Color**  
Bianco / White

**100% Cotone / Cotton**

**Taglie / Sizes**  
XS ÷ XXXL

- 2 tasche / 2 pockets
- Con zip / With zip
- Tessuto piquet / Piquet fabric



horeca & services  
Casacche donna  
Woman tunics

■ Art. 14P09K452  
**CASACCA OLGA**  
Olga tunic



**Colore / Color**  
Pistacchio / Pistachio

65% Poliestere / Polyester  
35% Cotone / Cotton

**Taglie / Sizes**  
XS ÷ XXXL

■ 2 tasche / 2 pockets  
■ Con zip / With zip



horeca & services  
Casacche donna  
Woman tunics

■ Art. 14P09K452  
Giallo / Yellow



Colori disponibili / Available colors



■ Art. 13P09K318  
Azzurro / Light blue



■ Art. 13P09K318  
Rosa / Pink



■ Art. 13P09K318  
Lilla / Lilac



■ Art. 13P09K318  
Bianco / White

Colori disponibili / Available colors

oversize

Colori disponibili / Available colors



■ Art. 11P09K50  
Grigio / Grey



■ Art. 15P09K50  
CASACCA AURELIA  
Aurelia tunic

Colore / Color  
Arancio / Orange

100% Cotone / Cotton

Taglie / Sizes  
XS ÷ 4XL

- 2 tasche / 2 pockets
- Abbottonatura nascosta  
Concealed buttoning



■ Art. 11P09K50  
Azzurro / Light blue



Piegia nel centro dietro  
Pleat on the backside

Manica ad aletta  
Flap sleeve



■ Art. 11P09K90  
CASACCA CINZIA  
Cinzia tunic

Colore / Color  
Bianco / White

65% Poliestere / Polyester  
35% Cotone / Cotton

Taglie / Sizes  
XS ÷ 5XL

- 2 tasche / 2 pockets
- Automatici / Press stud



oversize



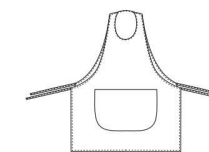
■ Art. 86  
COPRABITO  
Pinafore

Colore / Color  
Bianco / White

100% Cotone / Cotton

Taglie / Sizes  
TAGLIA UNICA / ONE SIZE

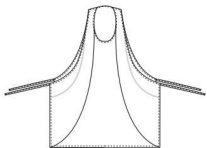
- Coperto dietro  
Covered backside





*horeca & services*  
Casache e coprabi  
Tunics and pinafores

■ **Art. 11P07H33**  
**SCAMICIATO LIBE**  
*Libe pinafore*



**Colore / Color**  
Col. 2002 Mare

65% Poliestere / Polyester  
35% Cotone / Cotton

**Taglie / Sizes**  
TAGLIA UNICA / ONE SIZE

- 2 ampie tasche / 2 wide pockets
- Coperto dietro / Covered backside



**Colori disponibili**  
*Available colors*



**Colore / Color**  
Col. 2001 Agrumi



*horeca & services*  
Casache e coprabi  
Tunics and pinafores

■ **Art. 11P07K31**  
**CASACCA LORELLA**  
*Lorella tunic*



**Colore / Color**  
Col. 2002 Mare

65% Poliestere / Polyester  
35% Cotone / Cotton

**Taglie / Sizes**  
XS ÷ XXL

- 2 tasche / 2 pockets



**Colori disponibili**  
*Available colors*



**Colore / Color**  
Col. 2001 Agrumi



*foreca & services*  
 Coordinati uomo e donna  
 Matching sets man  
 and woman



■ **Art. 116**  
**CAMICE UOMO**  
 Man's coat



**Colore / Color**  
 Bianco / White

65% Poliestere / Polyester  
 35% Cotone / Cotton  
 140 GR/MTQ

**Taglie / Sizes**  
 XS ÷ XXXL

- Manica lunga elastico al polso  
 Cuff with elastic band
- 3 tasche / 3 pockets



■ **Art. 200**  
**CAMICE DONNA**  
 Woman's coat



**Colore / Color**  
 Bianco / White

65% Poliestere / Polyester  
 35% Cotone / Cotton  
 140 GR/MTQ

**Taglie / Sizes**  
 XS ÷ XXL

- Manica lunga elastico al polso  
 Cuff with elastic band
- 3 tasche / 3 pockets



■ **Art. 118** Blu / Blue



■ **Art. 200C** Blu / Blue



■ **Art. 118** Verde / Green



■ **Art. 1355C** Verde / Green



■ **Art. 1350C** Bluette / Royal



■ **Art. 200C** Bluette / Royal

NEW

■ Art. 15P03R661  
**CAMICE ARNÒ**  
Arnò coat



**Colore / Color**  
Bianco / White

**100% Cotone / Cotton**  
167 GR/MTQ

**Taglie / Sizes**  
S ÷ XXXL

- 3 tasche / 3 pockets
- Polsino con bottone  
Cuff with button
- Slim fit



SLIMFIT



Martingala regolabile  
Adjustable Half belt



■ Art. 15P03R662  
**CAMICE JAQUELINE**  
Jaqueline coat



**Colore / Color**  
Bianco / White

**88% Cotone / Cotton**  
**12% Poliestere / Polyester**  
195 GR/MTQ

**Taglie / Sizes**  
XS ÷ XXL

- 3 tasche / 3 pockets
- Abbottonatura con  
automatici nascosti  
Concealed buttoning  
with press studs
- Polsino con bottone automatico  
Cuff with press stud
- Tessuto piquet  
Piquet fabric



■ Art. 1870  
**CAMICE IRIS**  
Iris coat



**Colore / Color**  
Bianco / White

**100% Cotone / Cotton**  
165 GR/MTQ

**Taglie / Sizes**  
XS ÷ XXL

- Bottoni a pressione  
Press studs
- 3 tasche / 3 pockets
- Martingala  
Half belt on the back
- Polsino con bottone automatico  
Cuff with press stud



■ Art. 8M110  
**CASACCA DALIA**  
Dalia tunic



**Colore / Color**  
Bianco / White

**100%** Cotone / Cotton  
165 GR/MTQ

**Taglie / Sizes**  
XS ÷ XXL

- 2 tasche / 2 pockets
- Polsino con elastico  
Cuff with elastic band
- Chiusura con zip  
Zip fastening



■ Art. 12P03K250  
**CASACCA AURELIA**  
Aurelia tunic



**Colore / Color**  
Bianco / White

**100%** Cotone / Cotton  
120 GR/MTQ

**Taglie / Sizes**  
XS ÷ XXXL

- 2 tasche / 2 pockets
- Cotone Piquet  
Cotton Piquet



■ Art. 9M1920  
**CASACCA BIANCA**  
Bianca tunic



**Colore / Color**  
Bianco / White

**100%** Cotone / Cotton  
165 GR/MTQ

**Taglie / Sizes**  
XS ÷ XXL

- 2 tasche / 2 pockets
- Con automatici  
Press studs



NEW

■ Art. 15P03K664  
**CASACCA NATALIA**  
Natalia tunic



**Colore / Color**  
Bianco / White

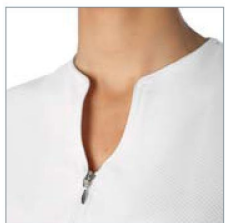
88% Cotone / Cotton  
12% Poliestere / Polyester  
195 GR/MTQ

**Taglie / Sizes**  
XS ÷ XXL

- 2 tasche / 2 pockets
- Chiusura con zip rovesciata  
Inverted zip fastening
- Tessuto Piquet  
Piquet fabric



SLIMFIT



NEW

■ Art. 15P03K665  
**CASACCA CLELIA**  
Clelia tunic



**Colore / Color**  
Bianco / White

100% Cotone / Cotton  
167 GR/MTQ

**Taglie / Sizes**  
XS ÷ XXL

- 2 tasche / 2 pockets
- Abbottonatura con  
automatici nascosti  
Concealed buttoning  
with press studs
- Polsino con bottone  
a pressione  
Cuff with press studs



SLIMFIT



■ Art. 1330  
**CASACCA UNISEX**  
Unisex tunic



**Colore / Color**  
Bianco / White

**100%** Cotone / Cotton  
190 GR/MTQ

**Taglie / Sizes**  
XS ÷ XXL

■ 3 tasche / 3 pockets



**Pantalone abbinabile**  
Coordinated pants

■ Art. 1340

Pag. 26 / 27

**Colori disponibili**  
Available colors



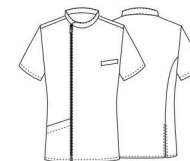
■ Art. 1335

**Colore / Color**  
Verde / Green



**Colore / Color**  
Azzurro / Light blue

■ Art. 14P03K491  
**CASACCA RUGGERO M/C**  
Ruggero tunic S/S



**Colore / Color**  
Bianco / White

**100%** Cotone / Cotton  
165 GR/MTQ

**Taglie / Sizes**  
S ÷ XXXL

■ 1 tasca / 1 pocket  
■ Taschino sul petto  
Breast pocket  
■ Chiusura con zip  
Zip fastening



**Colori disponibili**  
Available colors



■ Art. 14P03K489  
**60%** Cotone / Cotton  
**40%** Poliestere / Polyester  
200 GR/MTQ

**Colore / Color**  
Verde / Green



**Colore / Color**  
Blu / Blue

EASY CARE

■ Art. 10M2019  
**CASACCA MEDICALE**  
Man's tunic



**Colore / Color**  
Bianco / White

**60%** Cotone  
Cotton  
**40%** Poliestere  
Polyester

200 GR/MTQ

**Taglie / Sizes**  
XS ÷ XXXL

■ 3 tasche / pockets



EASY CARE

■ Art. 443DIVA

Bandana abbinata,  
disponibile nelle stesse  
**varianti colore** delle  
casacche.

*Matching bandana, available  
in same tunic's colors*

**Taglie / Sizes**  
TAGLIA UNICA / ONE SIZE



**Colori disponibili**  
Available colors



■ Art. 10M2020  
Verde / Green



■ Art. 10M2020  
Azzurro / Light blue



■ Art. 10M2020  
Blu / Blue



■ Art. 10M2020  
Bluette / Royal



■ Art. 10M2020  
Bordeaux / Burgundy



■ Art. 10M2020  
Lilla / Lilac



**Pantaloni abbinabili / Coordinated pants**

■ Art. 10M2062  
**CASACCA MARGHERITA**  
Margherita tunic



**Colore / Color**  
Bianco / White

**60%** Cotone / Cotton  
**40%** Poliestere / Polyester  
200 GR/MTQ

**Taglie / Sizes**  
XS ÷ XXL

■ 3 tasche / 3 pockets



EASY CARE



**Colori disponibili**  
Available colors



■ Art. 10M2062C  
Verde / Green



■ Art. 10M2062C  
Azzurro / Light blue



■ Art. 10M2062C  
Blu / Blue



■ Art. 10M2062C  
Blueette / Royal



■ Art. 10M2062C  
Bordeaux / Burgundy



■ Art. 10M2062C  
Lilla / Lilac



**Pantaloni abbinabili / Coordinated pants**



■ Art. 11P03K37  
**CASACCA SIMON**  
Simon tunic



**Colore / Color**  
Bianco e lilla / *White and lilac*

**60%** Cotone / *Cotton*  
**40%** Poliestere / *Polyester*  
200 GR/MTQ

**Taglie / Sizes**  
XS ÷ XXL

- 3 tasche / *3 pockets*
- Abbottonatura nascosta con automatici / *Concealed buttoning with press studs*



Colori disponibili / *Available colors*



**Color / Colors**  
Bianco e azzurro / *White and light blue*



**Color / Colors**  
Bianco e bordeaux / *White and burgundy*



**Color / Colors**  
Bianco e verde / *White and green*

health & care  
Casacche  
Tunics

■ Art. 12P03K251  
**CASACCA TATI**  
Tati tunic



**Colore / Color**  
Bianco / White

**100%** Cotone / Cotton  
125 GR/MTQ

**Taglie / Sizes**  
XS ÷ XXXL

- 3 tasche / 3 pockets
- Abbottonatura nascosta con automatici  
Concealed buttoning with press studs



health & care  
Casacche  
Tunics

■ Art. 12P03K269  
**CASACCA TATI**  
Tati tunic



**Colore / Color**  
Bordeaux / Burgundy

**60%** Cotone / Cotton  
**40%** Poliestere / Polyester  
200 GR/MTQ

**Taglie / Sizes**  
XS ÷ XXL

- 3 tasche / 3 pockets
- Abbottonatura nascosta con automatici  
Concealed buttoning with press studs



EASY CARE



**Colori disponibili**  
Available colors

■ Art. 14P03K494  
Blu / Blue



health & care  
Casacche  
Tunics

■ Art. 13P03K329  
**CASACCA AMANDA**  
Amanda tunic



**Colore / Color**  
Bluette / Royal

60% Cotone / Cotton  
40% Poliestere / Polyester  
200 GR/MTQ

**Taglie / Sizes**  
XS ÷ XXL

- 3 tasche / 3 pockets
- Abbottonatura nascosta con automatici  
Concealed buttoning with press studs
- Polsino con elastico  
Cuff with elastic band



EASY CARE



health & care  
Casacche  
Tunics

■ Art. 13P03K328  
**CASACCA RAFFAELLA**  
Raffaella tunic



**Colore / Color**  
Azzurro / Light blue

60% Cotone / Cotton  
40% Poliestere / Polyester  
200 GR/MTQ

**Taglie / Sizes**  
XS ÷ XXL

- 3 tasche / 3 pockets
- Chiusura con zip coperta  
Concealed zip fastening
- Polsino in maglia  
Knitted cuff



EASY CARE



**Colori disponibili**  
Available colors

**Colore / Color**  
Lilla / Lilac



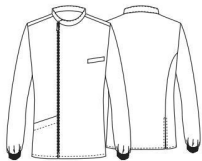
**Colori disponibili**  
Available colors

**Colore / Color**  
Verde / Green



Collo alla coreana chiuso da bottone a pressione  
Mandarin collar with press stud

■ Art. 14P03K492  
**CASACCA RUGGERO**  
Ruggero tunic



**Colore / Color**  
Bianco / White

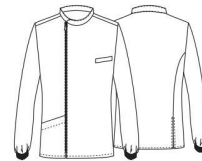
**100%** Cotone / Cotton

**Taglie / Sizes**  
S ÷ XXXL

- 1 tasca / 1 pocket
- Taschino sul petto  
Breast pocket
- Chiusura con zip  
Zip fastening
- Polsino in maglia  
Knitted cuff



■ Art. 14P03K490  
**CASACCA RUGGERO M/L**  
Ruggero tunic L/S



**60%** Cotone / Cotton  
**40%** Poliestere / Polyester

**Taglie / Sizes**  
S ÷ XXXL

- 1 tasca / 1 pocket
- Taschino sul petto  
Breast pocket
- Chiusura con zip  
Zip fastening
- Polsino in maglia  
Knitted cuff

EASY CARE



**Colore / Color**  
Verde / Green

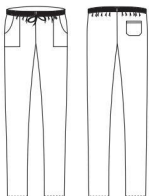


**Colore / Color**  
Azzurro / Light blue



**Colore / Color**  
Bluette / Royal

■ Art. 10M2061  
■ Art. 10M2061C  
**PANTALONE RODI**  
Rodi pants



60% Cotone / Cotton  
40% Poliestere / Polyester  
200 GR/MTQ

**Taglie / Sizes**  
XXS ÷ XXXL

- 4 tasche / 4 pockets
- Elastico e coulisse  
Elasticated waistband  
with drawstring



■ **Art. 10M2061**  
Bianco / White



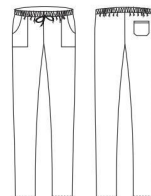
■ **Art. 10M2061C**  
Lilla / Lilac



■ **Art. 10M2061C**  
Verde / Green



■ Art. 14P03P556  
**PANTALONE ALAN**  
Alan pants



60% Cotone / Cotton  
40% Poliestere / Polyester  
200 GR/MTQ

**Taglie / Sizes**  
XXS ÷ XXXL

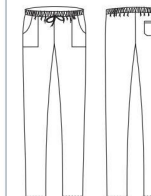
- 4 tasche / 4 pockets
- Elastico e coulisse  
Elasticated waistband  
with drawstring
- Slim fit



**SLIMFIT** EASY CARE  
Blu / Blue



■ Art. 123  
**PANTALONE UNISEX**  
Unisex pants



100% Cotone / Cotton  
190 GR/MTQ

**Taglie / Sizes**  
XS ÷ 4XL

- 4 tasche / 4 pockets
- Elastico e coulisse  
Elasticated waistband  
with drawstring



■ **Art. 123**  
Bianco / White

EASY CARE



■ **Art. 10M2061C**  
Azzurro / Light blue



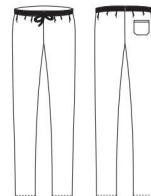
■ **Art. 10M2061C**  
Bluette / Royal



■ **Art. 10M2061C**  
Bordeaux / Burgundy



■ Art. 1340  
**PANTALONE UNISEX**  
Unisex pants



100% Cotone / Cotton  
150 GR/MTQ

**Taglie / Sizes**  
XS ÷ XXL

- 1 tasca sul retro  
1 rear pocket
- Elastico e coulisse  
Elasticated waistband  
with drawstring



■ **Art. 1340**  
Azzurro / Light blue



■ **Art. 1340**  
Verde / Green

wellness & beauty  
Casacche e coprabi  
Tunics and pinafores

■ Art. 1590N  
**CASACCA HELENA**  
Helena tunic



**Colore / Color**  
Nero / Black

65% Poliestere / Polyester  
35% Cotone / Cotton

**Taglie / Sizes**  
XS ÷ XXXL

■ Ampia tasca centrale  
Full central pocket



**Colori disponibili**  
Available colors

■ Art. 1590  
Bianco / White



■ Art. 14P02K458  
**CASACCA SION**  
Sion tunic



**Colore / Color**  
Bianco / White

65% Poliestere / Polyester  
35% Cotone / Cotton

**Taglie / Sizes**  
XS ÷ XXL

■ 2 tasche / 2 pockets  
■ Abbottonatura nascosta con automatici  
Concealed buttoning with press stud



FLEXFIT SYSTEM

WASH PROOF



wellness & beauty  
Casacche e coprabi  
Tunics and pinafores

**Colori disponibili**  
Available colors

**Colore / Color**  
Nero / Black



WASH PROOF



wellness & beauty

Casacche e coprabiiti  
Tunics and pinafores

■ Art. 13P02K355  
**CASACCA FRANCESCO**  
Francesco tunic



**Colore / Color**  
Nero / Black

65% Poliestere / Polyester  
35% Cotone / Cotton

**Taglie / Sizes**  
XS ÷ XXXL

- 1 taschino / 1 pocket
- Abbottonatura nascosta con automatici  
Concealed buttoning with press stud



WASH  PROOF



■ Art. 13P02K312  
**CASACCA ARISA**  
Arisa tunic



**Colore / Color**  
Nero / Black

65% Poliestere / Polyester  
35% Cotone / Cotton

**Taglie / Sizes**  
XS ÷ XXL

- 2 tasche / 2 pockets
- Abbottonatura nascosta con automatici  
Concealed buttoning with press stud



WASH  PROOF



wellness & beauty

Casacche e coprabiiti  
Tunics and pinafores

**Colori disponibili**  
Available colors

■ Art. 13P02K313  
Bianco / White

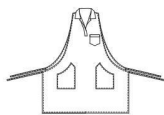
WASH  PROOF



wellness & beauty

Casacche e coprabit  
Tunics and pinafores

■ Art. 14P02H516  
**SCAMICIATO ARIANNA**  
Arianna pinafore



**Colore / Color**  
Nero e bordeaux  
Black and burgundy

100% Poliestere / Polyester

**Taglie / Sizes**  
TAGLIA UNICA / ONE SIZE

- Collo polo / Polo neck
- 3 tasche / 3 pockets
- Coperto dietro / Covered backside



**Colori disponibili**  
Available colors

■ Art. 14P02H503  
Bianco / White



wellness & beauty

Casacche e coprabit  
Tunics and pinafores

■ Art. 12P02K260  
**CASACCA BELEN**  
Belen tunic



**Colore / Color**  
Nero e bordeaux  
Black and burgundy

100% Poliestere / Polyester

**Taglie / Sizes**  
XS ÷ XXXL

- Manica raglan 3/4  
Raglan 3/4 sleeve
- Grande tasca centrale  
Big central pocket



**Colori disponibili**  
Available colors

■ Art. 12P02K257  
Bianco e nero  
White and black





wellness & beauty

Casacche e coprabi  
Tunics and pinafores

■ Art. 14P02K493  
**CASACCA SION**  
Sion tunic



**Colore / Color**

Marrone e avana  
Brown and havana

65% Poliestere / Polyester  
35% Cotone / Cotton

**Taglie / Sizes**

XS ÷ XXL

- 2 tasche / 2 pockets
- Abbottonatura nascosta con automatici  
Concealed buttoning with press stud
- Dietro tinta unica colore marrone  
Plain brown color on back



FLEXFIT SYSTEM



**Colori disponibili**  
Available colors

■ Art. 14P02K459  
Bianco e nero / White and black

- Dietro tinta unica colore nero  
Plain black color on back



FLEXFIT SYSTEM

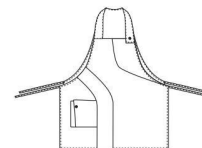
WASH PROOF



wellness & beauty

Casacche e coprabi  
Tunics and pinafores

■ Art. 14P02H461  
**SCAMICIATO DEA**  
Dea pinafore dress



**Colore / Color**

Marrone e avana  
Brown and havana

65% Poliestere / Polyester  
35% Cotone / Cotton

**Taglie / Sizes**

TAGLIA UNICA / ONE SIZE

- 1 tasca apribile  
con bottone automatico  
Expandable pocket  
with press stud
- Coperto dietro  
Covered backside



wellness & beauty  
Casacche e coprabiiti  
Tunics and pinafores

■ Art. 14P02K460  
**CASACCA PINES**  
Pines tunic



**Colore / Color**  
Bianco / White

65% Poliestere / Polyester  
35% Cotone / Cotton

**Taglie / Sizes**  
XS ÷ XXL

■ 2 tasche / 2 pockets  
■ Con zip / With zip



FLEXFIT SYSTEM

WASH PROOF

**Colori disponibili**  
Available colors

**Colore / Color**  
Nero / Black

FLEXFIT SYSTEM



wellness & beauty  
Casacche e coprabiiti  
Tunics and pinafores

■ Art. 14P02K495  
**CASACCA PINES**  
Pines tunic



**Colore / Color**  
Avana / Havana

65% Poliestere / Polyester  
35% Cotone / Cotton

**Taglie / Sizes**  
XS ÷ XXL

■ 2 tasche / 2 pockets  
■ Con zip / With zip



FLEXFIT SYSTEM





■ Art. 15P02K632  
**SMANICATO SARA**  
Sara pinafore



**Colore / Color**  
Nero / Black

65% Poliestere / Polyester  
35% Cotone / Cotton

**Taglie / Sizes**  
XS ÷ XXL

- 2 tasche / 2 pockets
- Abbottonatura nascosta con automatici  
Concealed buttoning with press stud



FLEXFIT SYSTEM

WASH PROOF



**Colore / Color**  
Pistacchio / Pistachio



**Colore / Color**  
Lilla / Lilac



**Colore / Color**  
Bianco / White

NEW

■ Art. 15P02K633  
**SMANICATO KELIS**  
*Kelis pinafore dress*



**Colore / Color**  
Bianco / White

88% Cotone / Cotton  
12% Poliestere / Polyester

**Taglie / Sizes**  
XS ÷ XXL

- 1 tasca / 1 pocket
- Chiusura con zip rovesciata  
*Inverted zip fastening*
- Cotone piquet  
*Cotton piquet*



FLEXFIT SYSTEM



■ Art. 15P03K664  
**CASACCA DONNA NATALIA**  
*Natalia tunic*



**Colore / Color**  
Bianco / White

88% Cotone / Cotton  
12% Poliestere / Polyester

**Taglie / Sizes**  
XS ÷ XXL

- 2 tasche / 2 pockets
- Chiusura con zip rovesciata  
*Inverted zip fastening*
- Cotone piquet  
*Cotton piquet*



FLEXFIT SYSTEM



wellness & beauty  
Casacche e coprabitì  
Tunics and pinafores



■ Art. 12P03K250  
**CASACCA AURELIA**  
Aurelia tunic

Colore / Color  
Bianco / White

100% Cotone / Cotton

Taglie / Sizes  
XS ÷ XXXL

- 2 tasche / 2 pockets
- Cotone piquet
- Cotton piquet



■ Art. 12P03K251  
**CASACCA TATI**  
Tati tunic

Colore / Color  
Bianco / White

100% Cotone / Cotton

Taglie / Sizes  
XS ÷ XXXL

- 3 tasche / 3 pockets
- Abbottonatura nascosta con automatici
- Concealed buttoning with press studs



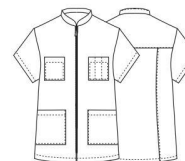
■ Art. 12P02K220  
**CASACCA**  
PARRUCCHIERI UNISEX  
Unisex tunic

Colore / Color  
Nero / Black

100% Poliestere / Polyester

Taglie / Sizes  
XS ÷ XXXL

- Con zip / With zip
- 4 tasche / 4 pockets



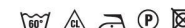
■ Art. 12P02K220  
**CASACCA**  
PARRUCCHIERI UNISEX  
Unisex tunic

Colore / Color  
Bianco / White

100% Poliestere / Polyester

Taglie / Sizes  
XS ÷ XXXL

- Con zip / With zip
- 4 tasche / 4 pockets



wellness & beauty  
Casacche e coprabiiti  
Tunics and pinafores

■ Art. 13P02K310  
**KIMONO FUJIKO**  
Fujiko kimono



**Colore / Color**  
Marrone / Brown

65% Poliestere / Polyester  
35% Cotone / Cotton

**Taglie / Sizes**  
XS ÷ XXL

■ 1 tasca / 1 pocket



FLEXFIT SYSTEM



Chiusura con doppio bottone  
Fastening with double button



wellness & beauty  
Casacche e coprabiiti  
Tunics and pinafores

■ Art. 13P02K311  
**KIMONO FUJIKO**  
Fujiko kimono



**Colore / Color**  
Avana / Havana

100% Cotone / Cotton

**Taglie / Sizes**  
XS ÷ XXL

■ 1 tasca / 1 pocket

■ Chiusura con doppio bottone  
Fastening with double button



FLEXFIT SYSTEM



wellness & beauty

Casacche e coprabi  
Tunics and pinafores

■ Art. 11P02K47  
**CASACCA TATI**  
Tati tunic



**Colore / Color**  
Bianco / White

60% Cotone / Cotton  
40% Poliestere / Polyester

**Taglie / Sizes**  
XS ÷ XXXL

- 3 tasche / 3 pockets
- Abbottonatura nascosta con automatici  
Concealed buttoning with press studs



EASY CARE

FLEXFIT SYSTEM



**Colori disponibili**  
Available colors

■ Art. 11P02K72  
Nero / Black



EASY CARE



wellness & beauty

Casacche e coprabi  
Tunics and pinafores

■ Art. 13P02K315  
**CASACCA ANTHIA**  
Anthia tunic



**Colore / Color**  
Grigio / Grey

60% Cotone / Cotton  
40% Poliestere / Polyester

**Taglie / Sizes**  
XS ÷ XXL

- 2 tasche / 2 pockets
- Abbottonatura nascosta con automatici  
Concealed buttoning with press studs



EASY CARE

FLEXFIT SYSTEM



**Colori disponibili**  
Available colors

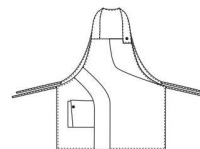
■ Art. 13P02K314  
Bianco / White

65% Poliestere / Polyester  
35% Cotone / Cotton





■ Art. 11P02H46  
**SCAMICIATO DEA**  
 Dea pinafore



**Colore / Color**  
 Nero e arancio  
 Black and orange

Nero e turchese  
 Black and turquoise

**100%** Poliestere / Polyester

**Taglie / Sizes**  
 TAGLIA UNICA / ONE SIZE



**Colore / Color**  
 Nero e pistachio / Black and pistachio



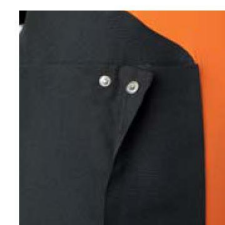
**Colore / Color**  
 Nero e viola / Black and violet



**Colore / Color**  
 Nero e bianco / Black and white



Coperto dietro  
 Covered backside



1 tasca apribile  
 con bottone automatico  
 1 expandable pocket  
 with press stud





■ Art. 15P02K635  
**CASACCA UNISEX**  
*Unisex tunic*



**Colore / Color**  
Beige / Beige

**100%** Cotone / Cotton

**Taglie / Sizes**  
XS ÷ XXL

- 3 tasche / 3 pockets
- Abbottonatura nascosta con automatici  
*Concealed buttoning with press studs*
- Tessuto oxford / Oxford fabric



FLEXFIT SYSTEM



■ Art. 15P02K634  
**CASACCA AMBRA**  
*Ambra tunic*

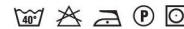


**Colore / Color**  
Beige / Beige

**100%** Cotone / Cotton

**Taglie / Sizes**  
XS ÷ XXL

- 1 tasca / 1 pocket
- Abbottonatura nascosta con automatici  
*Concealed buttoning with press studs*
- Tessuto oxford / Oxford fabric



FLEXFIT SYSTEM

NEW



■ Art. 15P02K631  
**CASACCA PRUSAC**  
Prusac tunic



**Colore / Color**  
Bianco, rosso, blu e giallo  
White, red, blue and yellow

65% Poliestere / Polyester  
35% Cotone / Cotton

**Taglie / Sizes**  
XS ÷ XXL

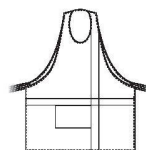
- 2 tasche / 2 pockets
- Chiusura con zip rovesciata  
Inverted zip fastening



FLEXFIT SYSTEM



■ Art. 15P02H630  
**SCAMICIATO KRISTAL**  
Kristal pinafore



**Colore / Color**  
Bianco, rosso, blu e giallo  
White, red, blue and yellow

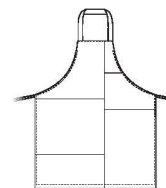
100% Poliestere / Polyester

**Taglie / Sizes**  
TAGLIA UNICA / ONE SIZE

- 1 tasca centrale  
1 central pocket
- 5 bottoni decorativi  
5 decorative buttons
- Coperto dietro  
Covered backside



■ Art. 15P02H627  
**GREMBIULE MONDRIAN**  
Mondrian apron



**Colore / Color**  
Bianco, rosso, blu e giallo  
White, red, blue and yellow

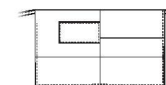
100% Poliestere / Polyester

**Taglie / Sizes**  
TAGLIA UNICA / ONE SIZE

- 1 tasca / 1 pocket



■ Art. 15P02H629  
**GREMBIULE PIET**  
Piet apron

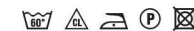


**Colore / Color**  
Bianco, rosso, blu e giallo  
White, red, blue and yellow

100% Poliestere / Polyester

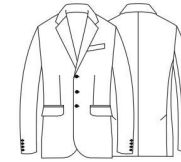
**Taglie / Sizes**  
TAGLIA UNICA / ONE SIZE

- 1 tasca laterale  
1 side pocket





■ Art. 12P01C230  
**GIACCA UOMO**  
 Man's jacket



53% Poliestere / Polyester  
 43% Lana / Wool  
 4% Elastan

Taglie / Sizes  
 44 - 60

- Sfiacata / Tight waisted
- Foderata / Lined
- 3 bottoni / 3 buttons
- 2 spacchi laterali / 2 side vents



Grigio / Grey

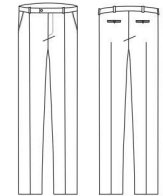


Nero / Black



Blu / Blue

■ Art. 12P01P231  
**PANTALONE UOMO**  
 Man's trousers



53% Poliestere / Polyester  
 43% Lana / Wool  
 4% Elastan

Taglie / Sizes 40 - 64

- Foderato / Lined
- 2 tasche alla francese / 2 side pockets
- 2 taschine posteriori / 2 rear pockets



Grigio / Grey



Nero / Black



Blu / Blue



■ Art. 12P01C232  
**GIACCA DONNA**  
 Woman's jacket



53% Poliestere / Polyester  
 43% Lana / Wool  
 4% Elastan

Taglie / Sizes  
 XS ÷ XXXL

■ Sfiacata / Tight waisted  
 ■ Foderata / Lined  
 ■ 2 bottoni / buttons



Grigio / Grey



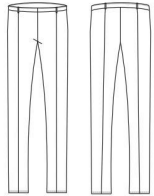
Nero / Black



Blu / Blue



■ Art. 12P01P233  
**PANTALONE DONNA**  
 Woman's pants



Colore / Color  
 Grigio / Grey

53% Poliestere / Polyester  
 43% Lana / Wool  
 4% Elastan

Taglie / Sizes XS ÷ XXL

- Con zip nel fianco  
 Side zip fastening
- Con passanti  
 Belt loops



Colori disponibili  
 Available colors

- Nero / Black
- Blu / Blue



Colori disponibili  
 Available colors

- Nero / Black
- Blu / Blue

■ Art. 12P01B268  
**GONNA**  
 Skirt



Colore / Color  
 Grigio / Grey

53% Poliestere / Polyester  
 43% Lana / Wool  
 4% Elastan

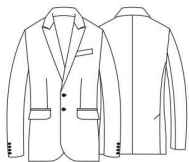
Taglie / Sizes  
 XS ÷ XXL

- Foderata / Lined
- Con fascione / With waist band
- Chiusura con zip  
 nel centro dietro  
 Back zip fastening
- Spacco nel centro dietro  
 Centre vent



**NEW**

■ Art. 15P01C600  
**GIACCA UOMO JOSEF**  
*Josef man's jacket*



Colore / Color Nero / Black

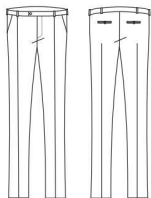
70% Poliestere / Polyester  
25% Rayon  
5% Elastan

Taglie / Sizes 42 ÷ 56

- Sfiancata / Tight waisted
- Sfoderata / Unlined
- 2 bottoni / 2 buttons
- 2 spacchi laterali  
2 side Vents



■ Art. 15P01P602  
**PANTALONE FRANCESE UOMO**  
*Man's trousers*



Colore / Color Nero / Black

70% Poliestere / Polyester  
25% Rayon  
5% Elastan

Taglie / Sizes 42 ÷ 56

- Vita bassa / Low waist
- 2 tasche alla francese  
2 side pockets
- 2 taschine posteriori  
2 rear pockets
- Fondo stretto / Slim leg



**NEW**

■ Art. 15P01C603  
**GIACCA DONNA ZAIRA**  
*Zaira woman's jacket*



Colore / Color Nero / Black

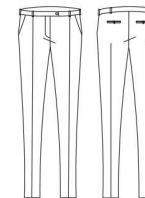
70% Poliestere / Polyester  
25% Rayon  
5% Elastan

Taglie / Sizes XS ÷ XXXL

- Sfiancata / Tight waisted
- Sfoderata / Unlined
- 2 bottoni / 2 buttons



■ Art. 15P01P605  
**PANTALONE FRANCESE DONNA**  
*Woman's pants*



Colore / Color Nero / Black

70% Poliestere / Polyester  
25% Rayon  
5% Elastan

Taglie / Sizes XS ÷ XXXL

- Vita bassa / Low waist
- 2 tasche alla francese  
2 side pockets
- 2 taschine posteriori  
2 rear pockets
- Fondo stretto / Slim leg



**NEW**

■ Art. 15P01C603  
**GIACCA DONNA ZAIRA**  
*Zaira woman's jacket*



Colore / Color Blu / Blue

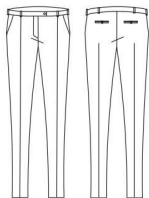
70% Poliestere / Polyester  
25% Rayon  
5% Elastan

Taglie / Sizes XS ÷ XXXL

- Sfiancata / Tight waisted
- Sfoderata / Unlined
- 2 bottoni / 2 buttons



■ Art. 15P01P605  
**PANTALONE FRANCESE DONNA**  
*Woman's pants*



Colore / Color Blu / Blue

70% Poliestere / Polyester  
25% Rayon  
5% Elastan

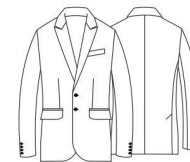
Taglie / Sizes XS ÷ XXXL

- Vita bassa / Low waist
- 2 tasche alla francese / Side pockets
- 2 taschine posteriori / 2 rear pockets
- Fondo stretto / Slim leg



**NEW**

■ Art. 15P01C600  
**GIACCA UOMO JOSEF**  
*Josef man's jacket*



Colore / Color Blu / Blue

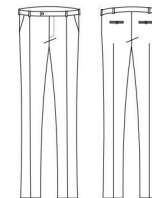
70% Poliestere / Polyester  
25% Rayon  
5% Elastan

Taglie / Sizes 42 ÷ 56

- Sfiancata / Tight waisted
- Sfoderata / Unlined
- 2 bottoni / 2 buttons
- 2 spacchi laterali / 2 side vents



■ Art. 15P01P602  
**PANTALONE FRANCESE UOMO VITA BASSA**  
*Man's trousers*



Colore / Color Blu / Blue

70% Poliestere / Polyester  
25% Rayon  
5% Elastan

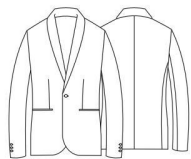
Taglie / Sizes 42 ÷ 56

- Vita bassa / Low waist
- 2 tasche alla francese / 2 side pockets
- 2 taschine posteriori / 2 rear pockets
- Fondo stretto / Slim leg



**NEW**

■ Art. 15P01C601  
**GIACCA UOMO MARSEL**  
*Marsel man's jacket*



**Colore / Color**  
Nero / Black

**70%** Poliestere / Polyester  
**25%** Rayon  
**5%** Elastan

**Taglie / Sizes**  
42 ÷ 56

- Sfiancata / Tight waisted
- Sfoderata / Unlined
- 1 bottone / 1 button
- Revers in raso / Satin lapel



Pantalone abbinato  
*Coordinated trousers*

■ Art. 15P01P602



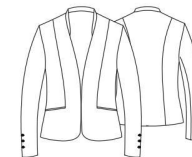
Bottone ricoperto  
*Covered button*



Tasca a filetto a contrasto  
*Welt pocket*

**NEW**

■ Art. 15P01C604  
**GIACCA DONNA ESTELLE**  
*Estelle woman's jacket*



**Colore / Color**  
Nero / Black

**70%** Poliestere / Polyester  
**25%** Rayon  
**5%** Elastan

**Taglie / Sizes**  
XS ÷ XXXL

- Sfiancata / Tight waisted
- Sfoderata / Unlined



Pantalone abbinato  
*Coordinated trousers*

■ Art. 15P01P605



Chiusura baciata  
*Hook-and-eye closure*

*horeca & services*  
Completi e capispalla  
Suits and jackets

■ Art. 180  
**GIACCA UOMO**  
Man's jacket



**Colore / Color**  
Blu / Blue

100% Poliestere / Polyester

**Taglie / Sizes**  
40 ÷ 64

- Sfiancata / Tight waisted
- Sfoderata / Unlined
- 2 bottoni / 2 buttons
- Spacco nel centro dietro  
Back centre vent



**Colori disponibili**  
Available colors

Nero / Black



*horeca & services*  
Completi e capispalla  
Suits and jackets

■ Art. 844  
**GIACCA DONNA**  
Woman's jacket



**Colore / Color**  
Blu / Blue

100% Poliestere / Polyester

**Taglie / Sizes**  
XS ÷ XXXL

- Sfiancata / Tight waisted
- Sfoderata / Unlined
- 2 bottoni / 2 buttons



**Colori disponibili**  
Available colors

Nero / Black





*horeca & services*  
Completi e capispalla  
Suits and jackets

■ **Art. 12P01C234**  
**GIACCA DONNA**  
Woman's jacket



**Colore / Color**  
Nero-Bianco / Black-White

100% Poliestere / Polyester

**Taglie / Sizes**  
XS ÷ XXL

- Sfiancata / Tight waisted
- Sfoderata / Unlined
- 3 bottoni / 3 buttons



UNCHANGE



*horeca & services*  
Completi e capispalla  
Suits and jackets

■ **Art. 7M1183B**  
**GIACCA DONNA**  
Woman's jacket



**Colore / Color**  
Blu / Blue

100% Poliestere / Polyester

**Taglie / Sizes**  
XS ÷ XXXL

- Sfiancata / Tight waisted
- Sfoderata / Unlined
- 3 bottoni / 3 buttons



UNCHANGE



■ **Art. 1183**

**Colori disponibili**  
Available colors

Nero / Black

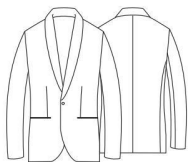
UNCHANGE



*horeca & services*

Completi e capispalla  
Suits and jackets

■ **Art. 121**  
**GIACCA UOMO**  
*Man's jacket*



**Colore / Color**

Nero / *Black*  
Panna / *Cream*

**100% Poliestere / Polyester**

**Taglie / Sizes**

XS - XXXL

- Sfiancata / *Tight waisted*
- Sfoderato / *Unlined*
- 1 bottone / *1 button*



**SLIMFIT**

UNCHANGE



**Colori disponibili**  
**Available colors**

Bianco / *White*



*horeca & services*

Completi e capispalla  
Suits and jackets



■ Art. 14P08G539  
**GIACCA SABRY**  
Sabry jacket



Colore / Color Tortora / Toupé

65% Poliestere / Polyester  
35% Cotone / Cotton

Taglia / Size XS ÷ XXL

- Taschino sul petto / Breast pocket
- Inserti in rete / Network fabric panels
- Bottoni a pressione / Press stud



Colori disponibili / Available colors



EASY CARE



■ 14P08G466 Bianco / White  
60% Cotone / Cotton - 40% Poliestere / Polyester



■ Art. 14P08G538  
**GIACCA SERGIO**  
Sergio jacket



Colore / Color Tortora / Toupé

65% Poliestere / Polyester  
35% Cotone / Cotton

Taglia / Size XS ÷ XXL

- Taschino sul petto / Breast pocket
- Inserti in rete / Network fabric panels
- Bottoni a pressione / Press stud
- 2 spacchi dietro / 2 side vents



Colori disponibili / Available colors



EASY CARE



■ 14P08G465 Bianco / White  
60% Cotone / Cotton - 40% Poliestere / Polyester



■ 14P08G465 Nero / Black  
60% Cotone / Cotton - 40% Poliestere / Polyester





LUDMILLA Colori disponibili / Available colors



■ Art. 7M893  
Bianco / White



■ Art. 7M894  
Nero / Black



■ Art. 9M1845  
Celeste / Light blue

DIMITRI Colori disponibili / Available colors



■ Art. 7M1121  
Bianco / White



■ Art. 7M1122  
Nero / Black



■ Art. 9M1148  
Celeste / Light blue

■ Art. 9M1148  
CAMICIA DIMITRI  
Dimitri shirt



Colore / Color  
Celeste / Light blue

97% Cotone / Cotton  
3% Spandex

Taglie / Sizes  
XS ÷ XXL

- Collo classico  
Classic collar
- Semisfiancata  
Lightly tight waisted
- 1 Tasca / 1 Pocket



■ Art. 9M1845  
CAMICIA LUDMILLA  
Ludmilla blouse



Colore / Color  
Celeste / Light blue

97% Cotone / Cotton  
3% Spandex

Taglie / Sizes  
XS ÷ XXL

- Collo classico  
Classic collar
- Semisfiancata  
Lightly tight waisted



NEW



■ Art. 15P01N448  
CAMICIA ROBERTO  
Roberto shirt



Colore / Color  
Malva / Mauve

97% Cotone / Cotton  
3% Spandex

Taglie / Sizes  
S ÷ XXL

■ Sfiancata / Tight waisted  
■ Collo francese  
Spread collar



Colori disponibili / Available colors



■ Art. 14P01N448  
Militare / Military



■ Art. 11P01O58  
Grigio / Grey



■ Art. 10M1546  
Marrone / Brown



■ Art. 14P01N448  
Beige / Beige

NEW



■ Art. 15P01N447  
CAMICIA LELA  
Lela blouse



Colore / Color  
Malva / Mauve

97% Cotone / Cotton  
3% Spandex

Taglie / Sizes  
XS ÷ XXL

■ Sfiancata / Tight waisted  
■ Collo classico / Classic collar



Colori disponibili / Available colors



■ Art. 14P01N447  
Militare / Military



■ Art. 11P01O59  
Grigio / Grey



■ Art. 10M164  
Marrone / Brown



■ Art. 10M164  
Bianco / White



■ Art. 10M164  
Nero / Black



■ Art. 14P01N447  
Beige / Beige

horeca & services

Camicie uomo e donna  
Shirts and blouses

■ Art. 1003  
**CAMICIA SHARM**  
Sharm blouse



**Colore / Color**  
Bianco / White

65% Poliestere / Polyester  
35% Cotone / Cotton

**Taglie / Sizes**  
XS ÷ XXL

- Manica 3/4 con scollo fantasia  
3/4 Sleeve
- Semisfiancata  
Lightly tight waisted



■ Art. 1003N  
Nero / Black



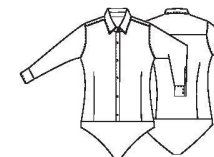
horeca & services

Camicie uomo e donna  
Shirts and blouses

**NEW**



■ Art. 15P01N626  
**CAMICIA BODY METKA**  
Metka body blouse



**Colore / Color**  
Bianco / White

97% Cotone / Cotton  
3% Spandex

**Taglie / Sizes**  
XS ÷ XXL

- Collo classico / Classic collar

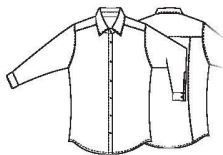


Slip in microfibra  
con bottone a pressione  
Microfiber slip  
with press stud

*horeca & services*

Camicie uomo e donna  
Shirts and blouses

■ Art. 11P01056  
**CAMICIA PRINCE**  
Prince shirt



**Colore / Color**  
Bianco / White

65% Poliestere / Polyester  
35% Cotone / Cotton

**Taglie / Sizes**  
XS ÷ XXXXL

■ Collo classico  
Classic collar  
■ Sfiacata  
Tight waisted



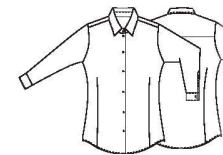
■ Art. 11P01056C  
Bianca / White  
Manica corta / Short sleeve



*horeca & services*

Camicie uomo e donna  
Shirts and blouses

■ Art. 1600  
**CAMICIA AURORA**  
Aurora blouse

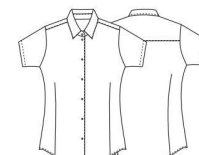


**Colore / Color**  
Bianco / White

65% Poliestere / Polyester  
35% Cotone / Cotton

**Taglie / Sizes**  
XS ÷ XXL

■ Semisfiacata  
Lightly tight waisted



■ Art. 1600C  
Bianca / White  
Manica corta / Short sleeve







■ Art. 11P01056  
**CAMICIA PRINCE**  
 Prince shirt

Colore / Color  
 Nero / Black

65% Poliestere / Polyester  
 35% Cotone / Cotton

Taglie / Sizes  
 XS ÷ XXXXL

- Collo classico  
 Classic collar
- Sfiancata / Tight waisted



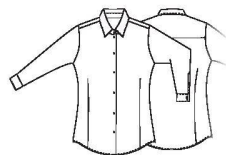
■ Art. 11P01057  
**CAMICIA FARA**  
 Fara blouse

Colore / Color  
 Nero / Black

65% Poliestere / Polyester  
 35% Cotone / Cotton

Taglie / Sizes  
 XS ÷ XXL

- Collo classico  
 Classic collar
- Semisfiancata  
 Lightly tight waisted



■ Art. 12P01N240  
**CAMICIA LELA**  
 Lela blouse

Colore / Color  
 Bianco / White

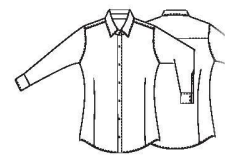
100% Cotone / Cotton

Taglie / Sizes  
 XS ÷ XXXL

- Sfiancata / Tight waisted
- No stiro / No iron



IRON ~~FREE~~



■ Art. 12P01N241  
**CAMICIA ROBERTO**  
 Roberto shirt

Colore / Color  
 Bianco / White

100% Cotone / Cotton

Taglie / Sizes  
 XS ÷ XXXL

- Sfiancata / Tight waisted
- Collo alla francese  
 Spread collar
- No stiro / No iron



IRON ~~FREE~~